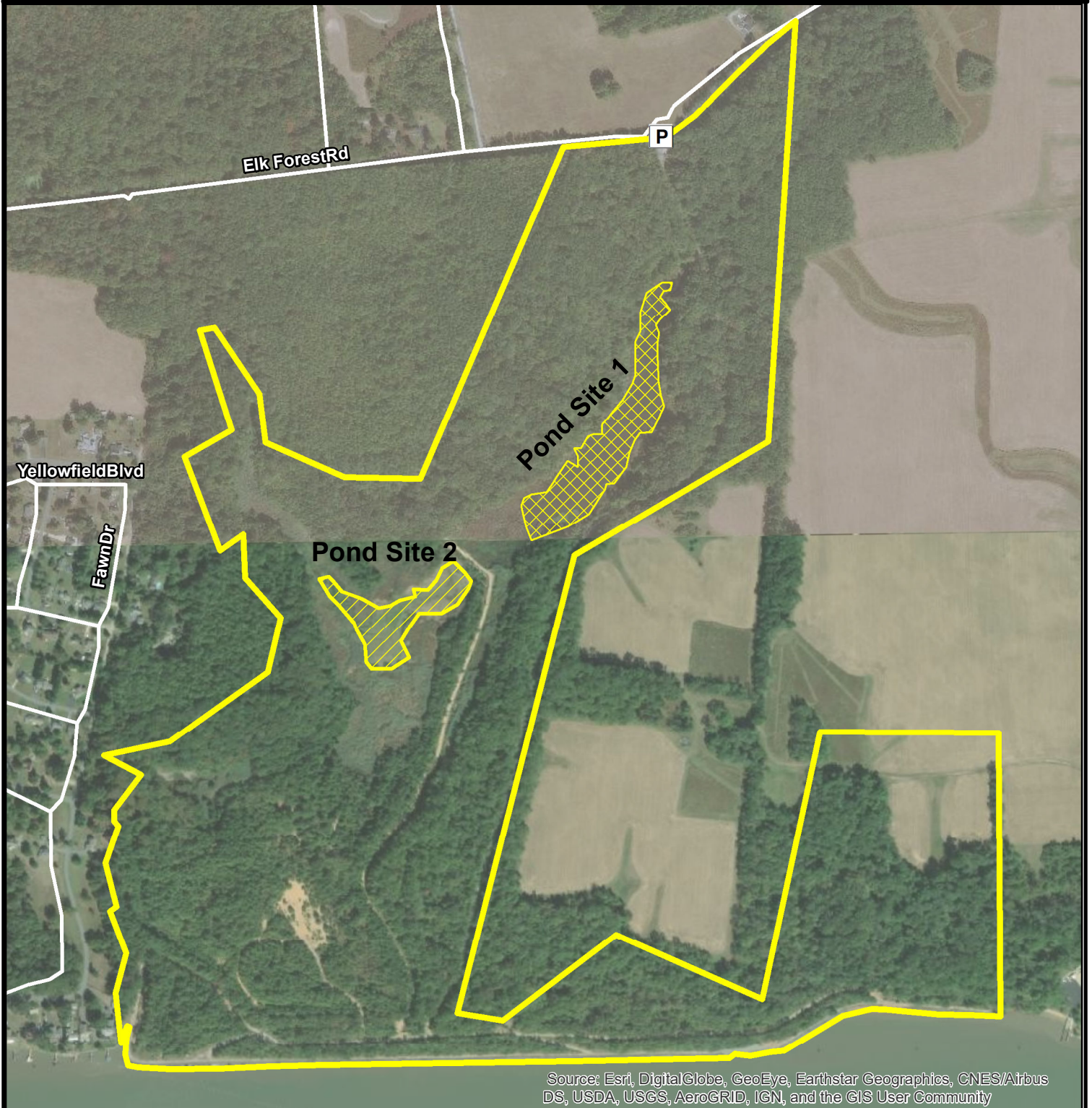





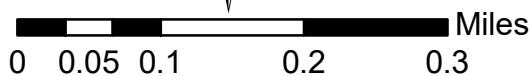
# Elk Forest Managed Hunting Area



Source: Esri, DigitalGlobe, GeoEye, Earthstar Geographics, CNES/Airbus DS, USDA, USGS, AeroGRID, IGN, and the GIS User Community

## Legend

-  Elk Forest Parking Area
-  Elk Forest Boundary
-  Pond Site 1
-  Pond Site 2



Wildlife and Heritage Service  
33626 Maryland Line Road  
Massey, Maryland 21650  
410-928-3650