



## SOUTH SAVAGE MOUNTAIN, GARRETT COUNTY, MD

South Savage Mountain Natural Area is a large forested landscape nestled between the southern end of Big Savage Mountain and Savage River Reservoir. Much of the area contains very steep inclines. The intact forests are a mix of oaks, with chestnut and white oaks dominating on the upper slopes, and northern red and white oaks dominating on the lower portions. This forest supports an unusually diverse community of plants and animals, including invertebrates that thrive in the duff layer (decomposing organic matter) of the forest floor. The understory and canopy of the trees is utilized by forest interior nesting birds. Among these is the rare cerulean warbler (*Dendroica caerulea*), which specializes in foraging and nesting in the tallest trees. American black bears roam through the forest in search of acorns, berries and the occasional small animal. Rare bobcats (*Lynx rufus*) stalk silently through the thickets. Much of this area is underlain by acidic sandstones and shale, so the soils primarily support plant communities that prefer or require acidic conditions. However there are areas where less acidic conditions persist, particularly in a band near Savage River where a number of notable rare plant populations have been found. Among the very diverse herbaceous plant community in this area's understory is a population of the Endangered Porter's reedgrass (*Calamagrostis porteri*). Its occurrence here is the only documented population for the entire Allegheny Plateau within the state.



DAVE KAZYAK



WIKIMEDIA COMMONS

Cerulean warbler

### THE BASICS

- No Facilities
- No Marked Trails
- Camping Sites at Trailhead



WIKIMEDIA COMMONS

The solitary bobcat is a stealthy hunter and nearly twice the size of most housecats.

### WATCH OUT FOR!

- Steep, Rugged Terrain
- Ticks and Stream Crossings

Even though the South Savage Mountain Natural Area does not typically include permanent streams, it does contain ephemeral streams, vernal pools, springs and seepage areas. These small water bodies provide habitat for a number of rare or uncommon invertebrates as well as amphibians, and contribute to overall habitat diversity. Surface streams in this region generally are clean and cool, supporting notable populations of native aquatic species, including fish such as brook trout. South Savage Mountain Natural Area encompasses over 2,000 acres and provides habitat for more than a dozen rare plants and animals. It is contained within Savage River State Forest and is managed as a designated State Wildland.

### KEY ELEMENTS

- Cerulean Warbler
- Porter's Reedgrass
- Old Growth Forests
- Appalachian Cottontail
- Cliff and Rock Outcrops

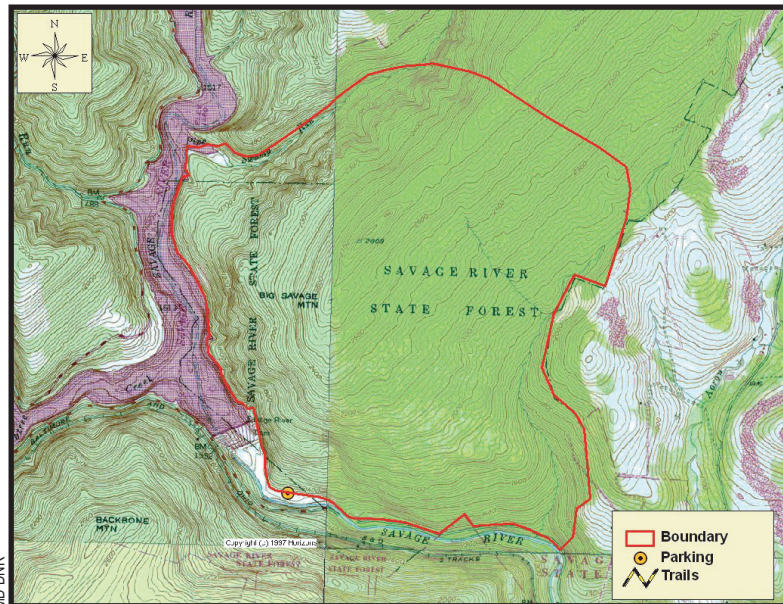


WIKIMEDIA COMMONS

American black bears are very opportunistic feeders as well as excellent tree climbers.



## SOUTH SAVAGE MOUNTAIN, GARRETT COUNTY, MD



South Savage Mountain Natural Area

**Special Note:** *Savage River State Forest is used seasonally by hunters.*



A hike through an old growth forest reveals trees of all ages, sizes and stages of decay.

### Old Growth Forest

Nearly 800 acres of old growth forest have been identified in this Natural Area, which is one of the largest remaining documented areas in Maryland that meet the Department of Natural Resource's criteria for old growth. Some of these criteria include large trees with a high degree of structural diversity, as well as dead trees still standing or decaying on the ground. Combined, these features provide key habitat for a variety of birds, especially warblers and woodpeckers, several plants and insects, and mammals such as the eastern red bat. Streams that course through old growth forests have large amounts of rough, woody debris that, in turn, create ideal habitat for many aquatic invertebrates and fish.

### Tale of a Cottontail

Closely resembling the familiar eastern cottontail, the rare Appalachian cottontail (*Sylvilagus obscurus*) can be distinguished by its smaller size, shorter ears, darker fur between the ears and along the back, and especially by differing skull features. Unlike the widespread and adaptable eastern cottontail, the Appalachian cottontail's range is restricted by its mountain habitat requirements: large tracts of contiguous forest with embedded semi-open areas containing dense thickets of mountain laurel or great rhododendron. The old growth forests within South Savage Mountain Natural Area provide just such a setting. No longer considered a game animal in Maryland, the Appalachian cottontail is currently listed as In Need of Conservation. Its greatest threat is the invasion by its cousin, the eastern cottontail, via roads and clearings that penetrate large forest tracts.



WIKIMEDIA COMMONS

Appalachian cottontails usually have a black spot between the ears whereas eastern cottontails have a white spot.

### Directions

**From Frederick:** Take I-70 west to I-68 at Hancock. Continue on I-68 about 40 miles to Exit 42 on the west side of Cumberland. Follow US 220 (McMullen Highway SW) south about 18 miles to McCoolle. Turn right onto MD 135 (Westernport Road SW) and proceed 5 miles to MD 36 in Westernport. Continue straight across and go 2 miles more to Bloomington. Turn left to stay on MD 135 (Bloomington Road), cross the Savage River bridge, and turn right in 0.1 mile onto Savage River Road. Continue about 4 miles to a parking area on the right.



### CONTACT

**Savage River State Forest**  
127 Headquarters Lane  
Grantsville, MD 21536  
P: 301-895-5759

**For more information:**  
[http://dnr.maryland.gov/forests/Pages/publiclands/western\\_savageriverforest.aspx](http://dnr.maryland.gov/forests/Pages/publiclands/western_savageriverforest.aspx)