

Common Schoolyard Invertebrates

Invertebrates are the most numerous group of animals worldwide and are very important for food webs as predators, prey and decomposers. Insects are invertebrates that have 3 body parts- a head, thorax, and abdomen- along with 6 legs and a pair of antennae. Most insects also have paired wings. In addition to insects, other invertebrates like spiders and snails can also be found in schoolyards.

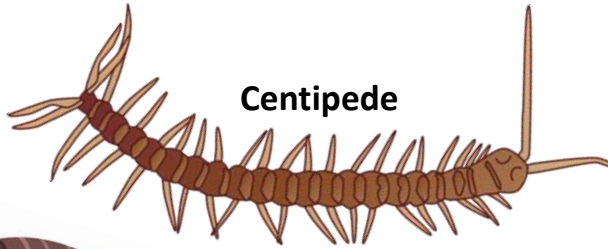
Not an Insect



Spider



Worm



Centipede



Millipede



Sowbug

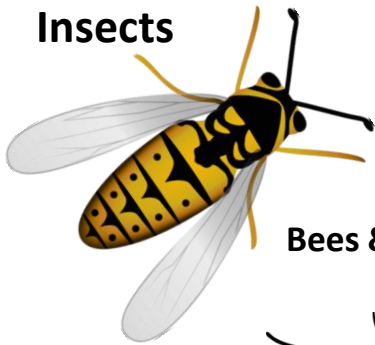


Snail

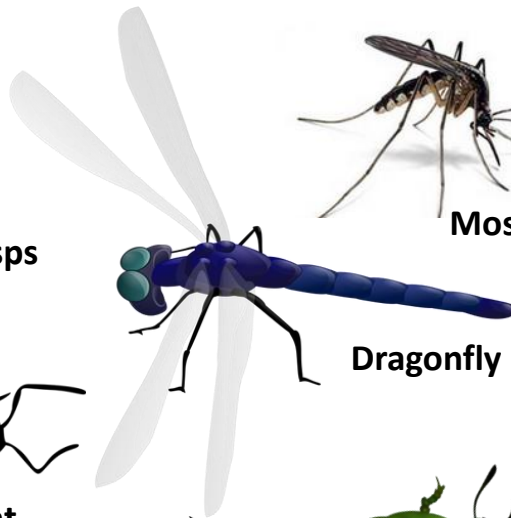


Slug

Insects



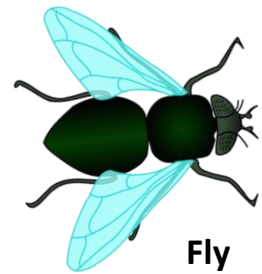
Bees & Wasps



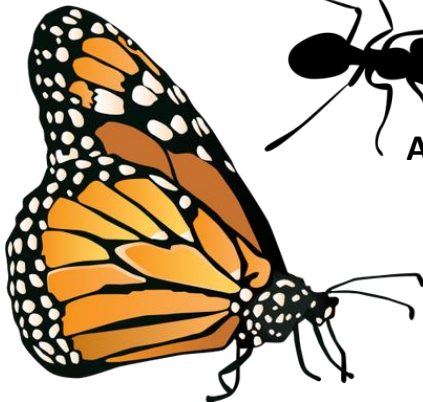
Dragonfly



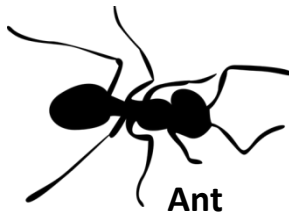
Mosquito



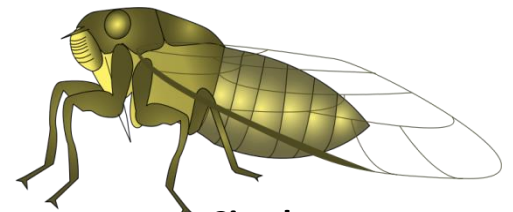
Fly



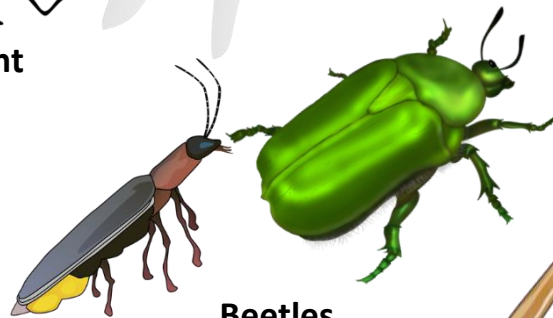
Butterflies & Moths



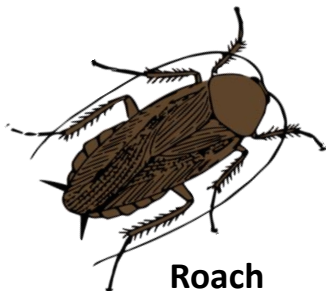
Ant



Cicada



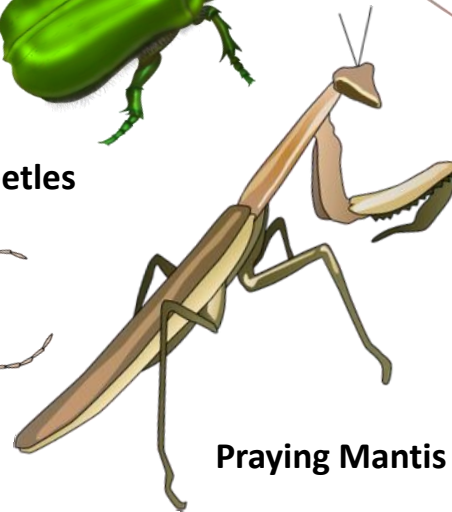
Beetles



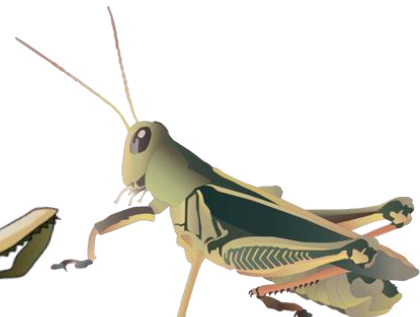
Roach



Earwig



Praying Mantis



Crickets & Grasshoppers

Common Schoolyard Invertebrates (Cont'd)

Below are brief descriptions for the different types of invertebrates found in schoolyards.

Invertebrate	Insect?	Description
Ant	Y	Has a narrow waist between the thorax and abdomen; adults typically lack wings and have antennae shaped like an elbow
Bees & Wasps	Y	Has two pairs of thin, transparent wings often with smaller back (hind) wings; bees typically hairy and wasps often are not
Beetle	Y	Has modified fore (front) wings that are hardened and thin backwings
Butterflies & Moths	Y	Has two pairs of scaly wings
Centipede	N	Has many segments with 1 pair of legs per segment; eats other invertebrates.
Cicada	Y	Has two pairs of wings held along body and a jointed mouth for sucking plant juices
Crickets & Grasshoppers	Y	Have large rear legs for jumping and for making noise
Dragonfly	Y	Has two pairs of long, almost equal wings with a long and slender body
Earwig	Y	Are medium-sized insects with pincer-like tail and segmented antennae
Fly	Y	Has one pair of wings and second pair of smaller wings (halteres); the eyes are large and antennae are small.
Millipede	N	Has many segments with 2 pairs of legs per segment; eats dead plant and animal materials
Mosquito	Y	Has single pair of fully developed wings and a smaller, reduced pair of wings; has sucking mouthparts
Praying Mantis	Y	Has large, rasping front legs; eats other organisms
Roach	Y	Has a broad, flattened body with a small head
Slug	N	Are shell-less mollusks which often are slimy
Snail	N	Are mollusks that have protective shell; often eats plants
Sowbug	N	Has a shell-like covering with segments; some can roll into a ball; related to crabs
Spider	N	2 body segments- head & abdomen; eats other invertebrates
Worm	N	Have long, cylindrical bodies with lots of segments