

1 MOUND NEST



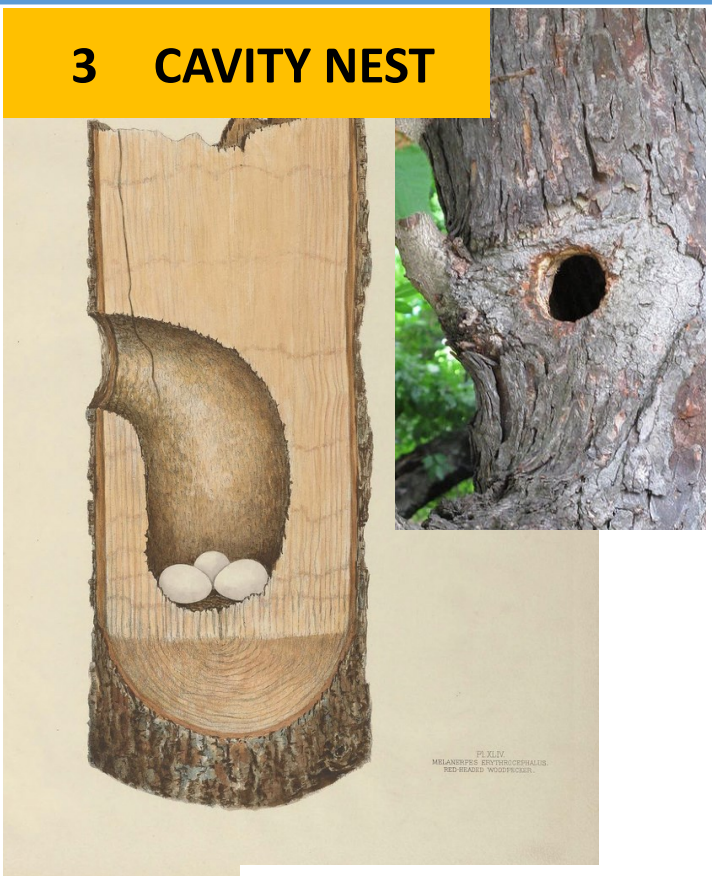
Lauren Tucker CC BY-NC 2.0

2 CUP NEST



Chris Huffman CC BY-NC-ND 2.0

3 CAVITY NEST



Kristine Paulus CC BY 2.0
Biodiversity Heritage Library CC BY 2.0

4 PLATFORM NEST



Dunnoch_D CC BY-NC 2.0

Nest Description



MATERIALS:

Twigs



Bark strips



Pine needles

SHAPE: cup



SIZE: 4 inches across

LOCATION: in shrub/small tree



Nest Description



MATERIALS:

Dried reeds and
grass

SHAPE: simple mound



SIZE: 12 inches or more wide

LOCATION: on the ground, at edge of lake



Nest Description



MATERIALS:

Sticks



Dried reeds and
grasses

SHAPE: platform



SIZE: 3 feet or more wide

LOCATION: top of tree



Nest Description



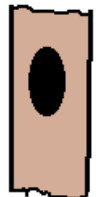
MATERIALS:

Wood chips

SHAPE: hole in tree

SIZE: 10 inches deep

LOCATION: tree trunk in forest





Mallard

Michael McCarthy CC BY-NC 2.0



Northern Cardinal

Nathas@gmail.com

Nathas CC BY-NC-ND 2.0



Pileated Woodpecker

Tom Murray CC BY-NC 2.0



Osprey

Andy Morffew CC BY 2.0

Northern Cardinal

Habitat: forest edges, backyards.



Food: seeds & fruits

Nest type: cup shape

Average number of eggs: 3-4

Mallard Duck

Habitat: wetlands, lakes, rivers, ponds.



Food: eats underwater plants

Nest type: mound on the ground, close to water

Average number of eggs: 12

Osprey

Habitat: lakes, bay, marshes, rivers



Food: fish

Nest type: platform

Average number of eggs: 2-3

Pileated Woodpecker

Habitat: mature woods



Food: beetle larvae, ants, other insects

Nest type: cavity

Average number of eggs: 3-4

5 SCRAPE NEST



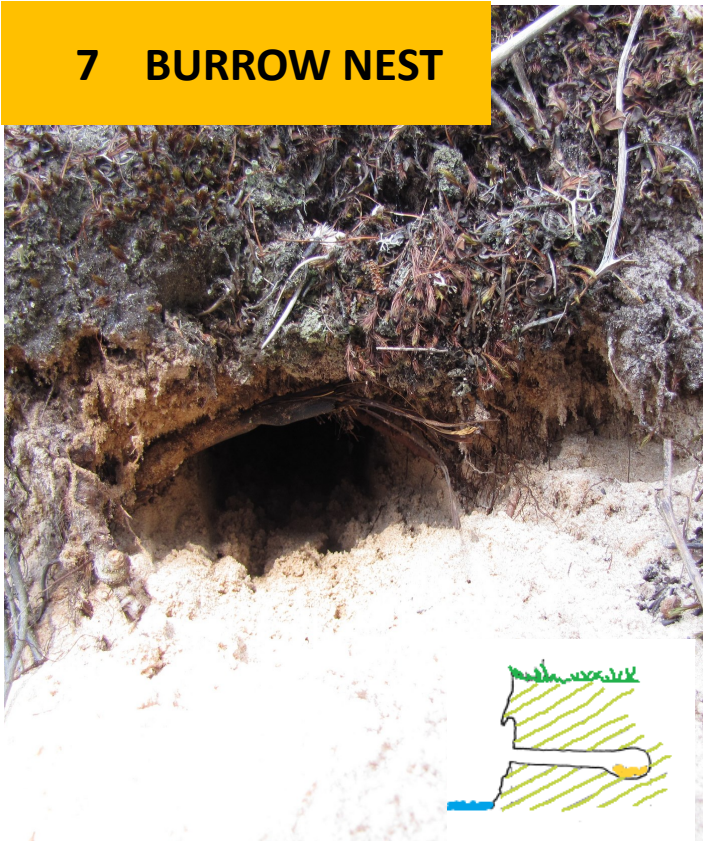
Northeast Coast & Barrier Network CC BY-SA 2.0

6 BRACKET NEST



J.N Stuart CC BY-NC-ND 2.0

7 BURROW NEST



Seney Natural History Association CC BY-SA 2.0

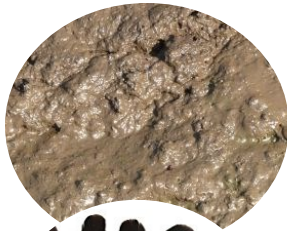
8 PENDANT NEST



Kathy1006 CC BY-NC-ND 2.0

Nest Description

MATERIALS:



Mud



Feathers

SHAPE: 1/2 cup against wall

SIZE: 4 inches deep

LOCATION: wall, barn



Nest Description

MATERIALS:



Sand

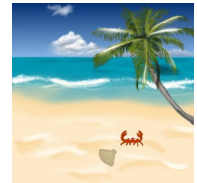


Pebbles

SHAPE: simple scrape

SIZE: 8 inches or more across

LOCATION: beach



Nest Description

MATERIALS:



Long grass

SHAPE: pendant

SIZE: 4 inches deep

LOCATION: end of thin branches



Nest Description

MATERIALS:

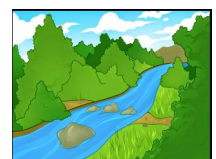
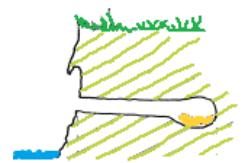


Sand

SHAPE: burrow in sandy bank

SIZE: 3-6 feet long

LOCATION: river bank



American Oystercatcher



Millo Bostock CC BY 2.0

Barn Swallow



Diana Robinson CC BY-NC-ND 2.0

Belted Kingfisher



Tommy P. World CC BY-NC 2.0

Baltimore Oriole



Tom Murray CC BY-NC 2.0

Barn Swallow

Habitat: fields, meadows



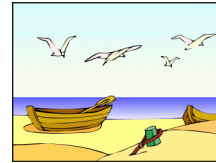
Food: flies, insects

Nest type: 1/2 cup against wall

Average number of eggs: 5

American Oystercatcher

Habitat: beaches, saltmarsh



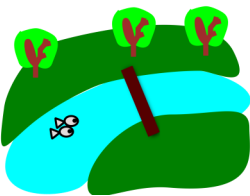
Food: oysters, clams, mussels

Nest type: scrape in sand or pebble beach

Average number of eggs: 2-4

Baltimore Oriole

Habitat: open woods and rivers



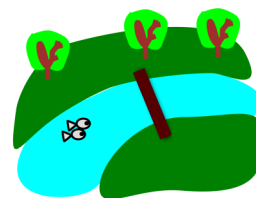
Food: fruit, insects

Nest type: pendant (sock-like)

Average number of eggs: 4-6

Belted Kingfisher

Habitat: rivers



Food: fish

Nest type: a burrow in sandy bank

Average number of eggs: 5-8