

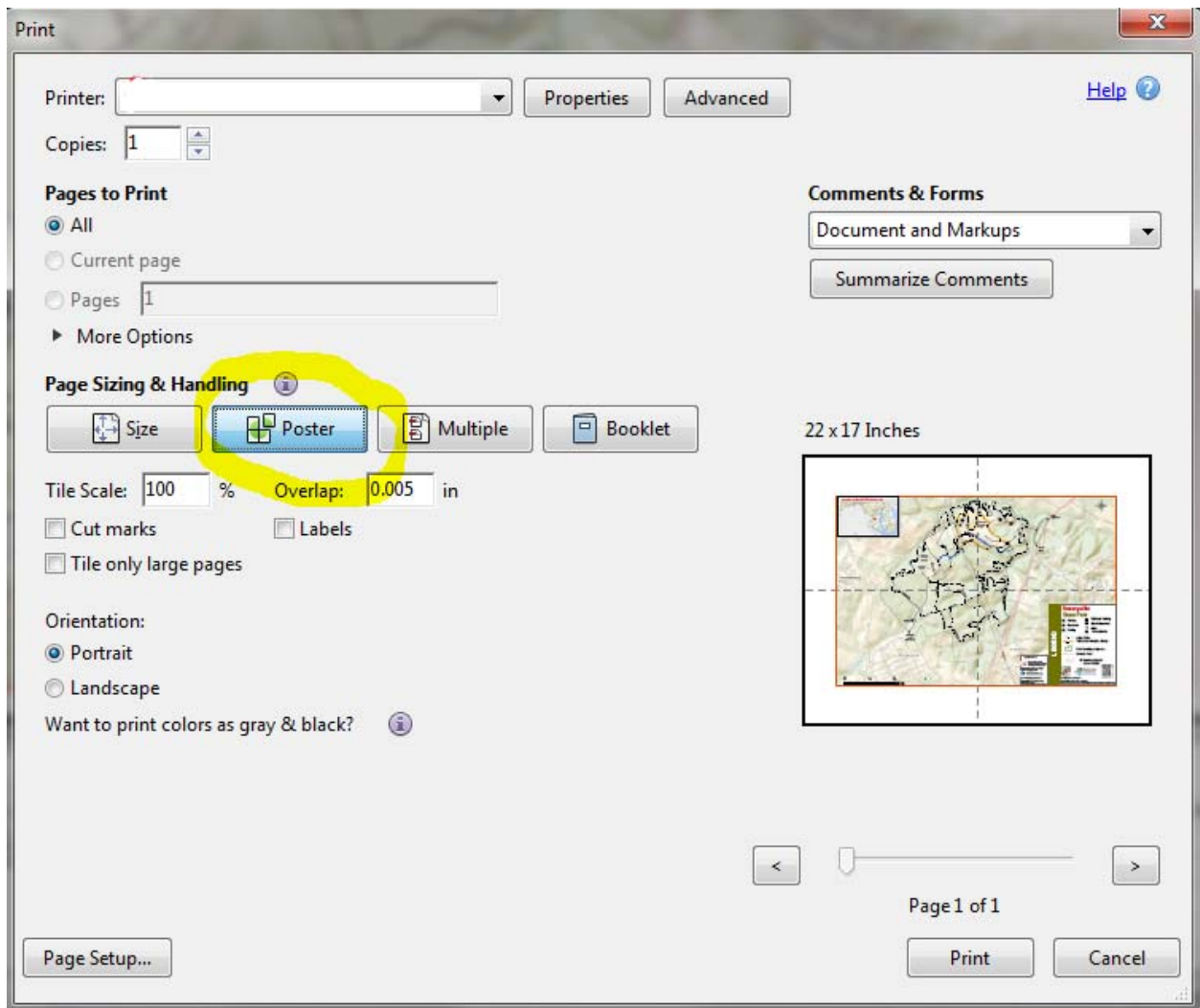
Maryland Park Service

Maryland State Park Trail Map Download & Print Instructions

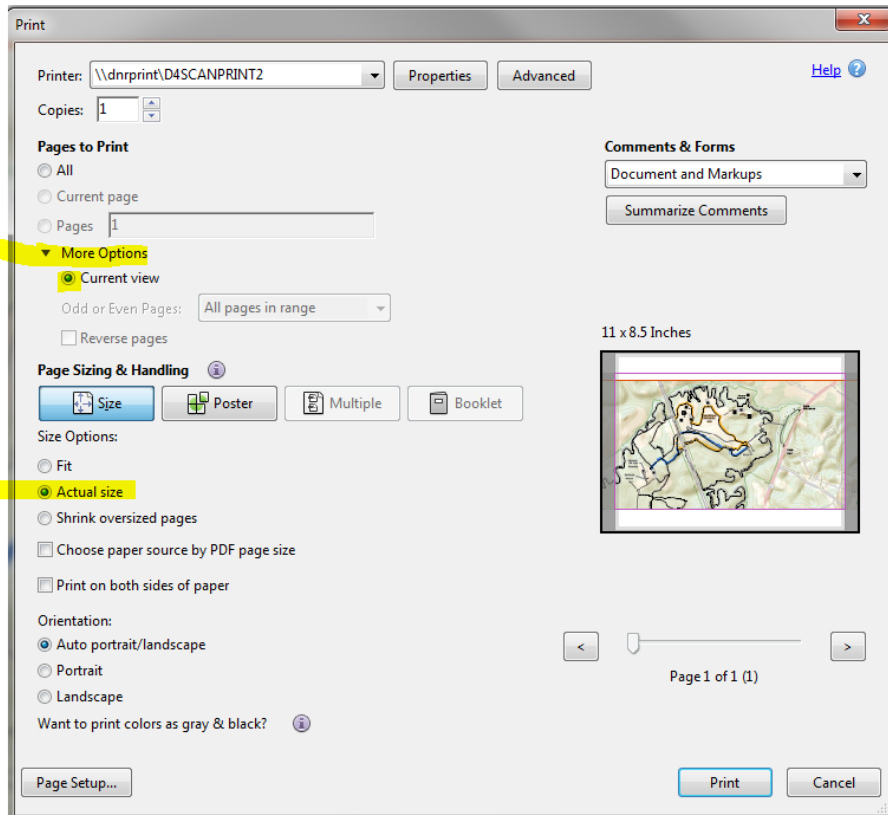
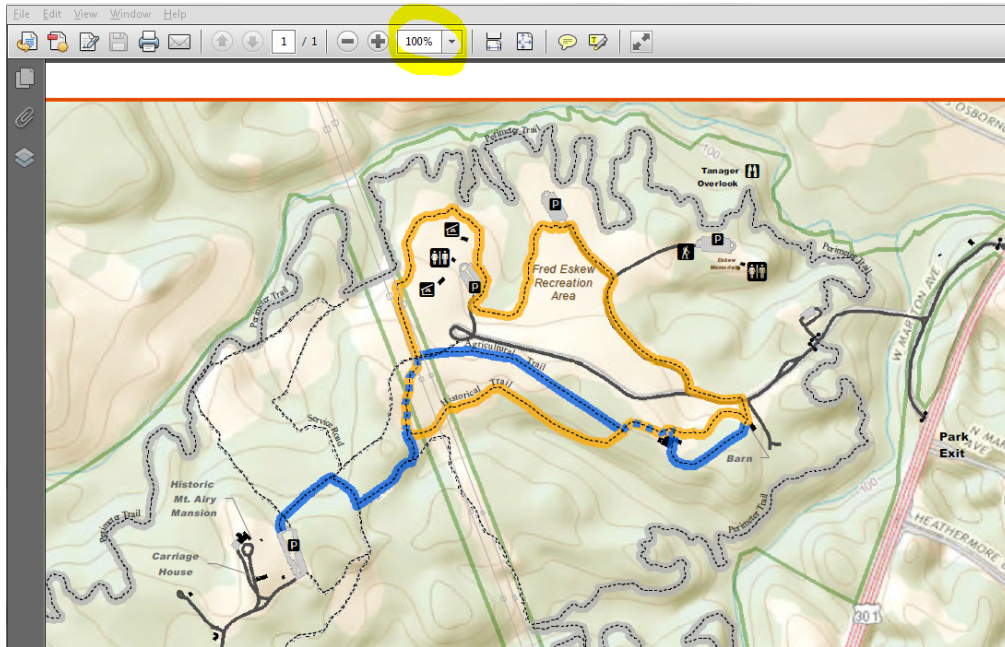
“Click” on the State Park Map on the park website to download the State Park Trail Map. The file will open if you have a program which allows viewing PDF files. If you do not have a program to view PDF files, you can download Adobe Reader for free to view this map.

The State Park Trail Map can be printed for personal use. Please note the map is designed to print at 19” x 13” and the text and symbols will be smaller than intended if fitted to letter sized paper.

If you would like to print at the intended scale, but your printer does not support larger paper, you can choose the POSTER option and tile this map across four pages. See sample below.



You can also set the print display to be 100% and adjust to see your area of interest. Then select to print just the current view. See sample below.



There are applications (e.g. Avenza's PDF Maps) which can read the locational information embedded within this PDF file and help you orient yourself while in the park. This example shows how to open an email with an attached PDF map in an app on an iPhone which can use utilize the geo-referencing information embedded in the file.

