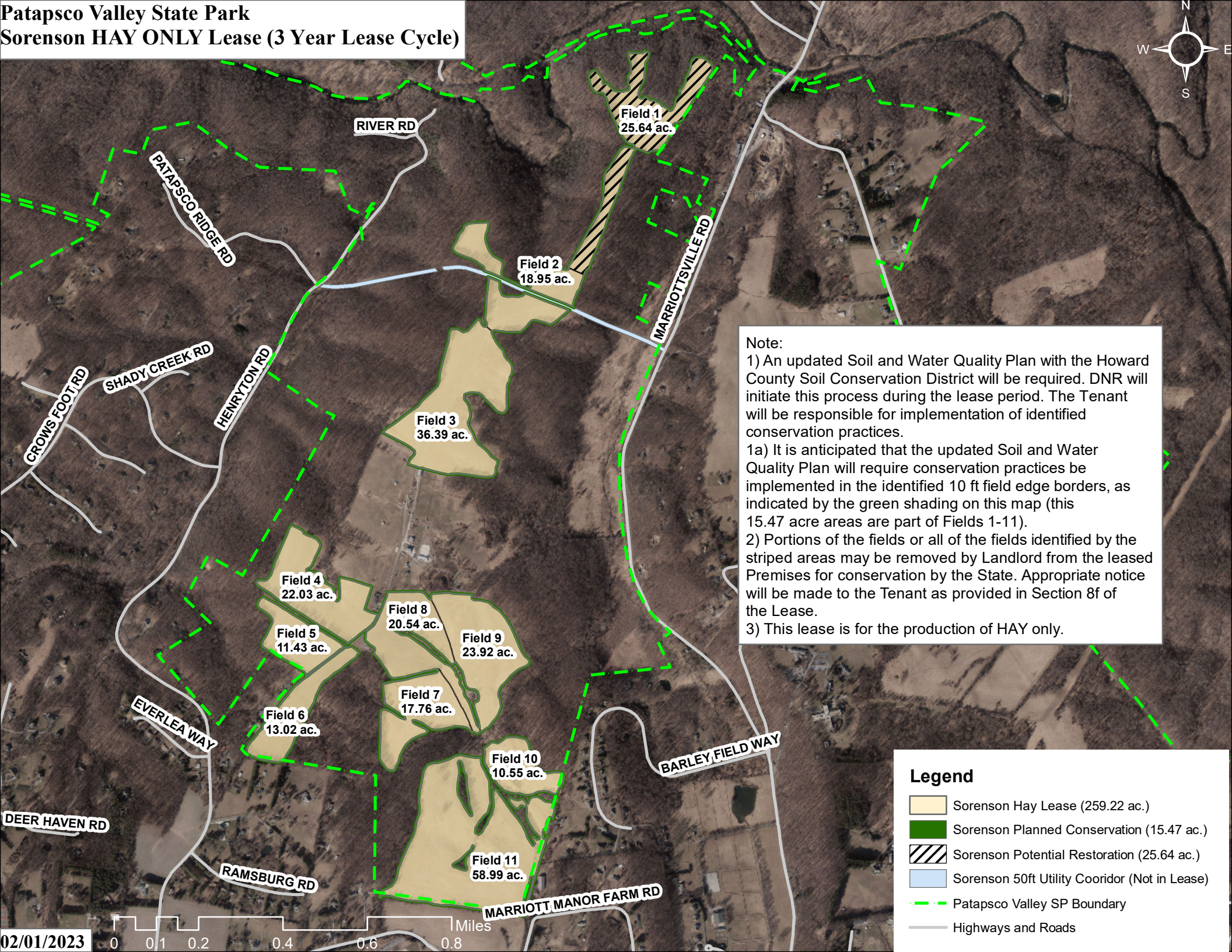


**Patapsco Valley State Park
Sorenson HAY ONLY Lease (3 Year Lease Cycle)**



Note:
 1) An updated Soil and Water Quality Plan with the Howard County Soil Conservation District will be required. DNR will initiate this process during the lease period. The Tenant will be responsible for implementation of identified conservation practices.
 1a) It is anticipated that the updated Soil and Water Quality Plan will require conservation practices be implemented in the identified 10 ft field edge borders, as indicated by the green shading on this map (this 15.47 acre areas are part of Fields 1-11).
 2) Portions of the fields or all of the fields identified by the striped areas may be removed by Landlord from the leased Premises for conservation by the State. Appropriate notice will be made to the Tenant as provided in Section 8f of the Lease.
 3) This lease is for the production of HAY only.

Legend

- Sorenson Hay Lease (259.22 ac.)
- Sorenson Planned Conservation (15.47 ac.)
- Sorenson Potential Restoration (25.64 ac.)
- Sorenson 50ft Utility Corridor (Not in Lease)
- Patapsco Valley SP Boundary
- Highways and Roads