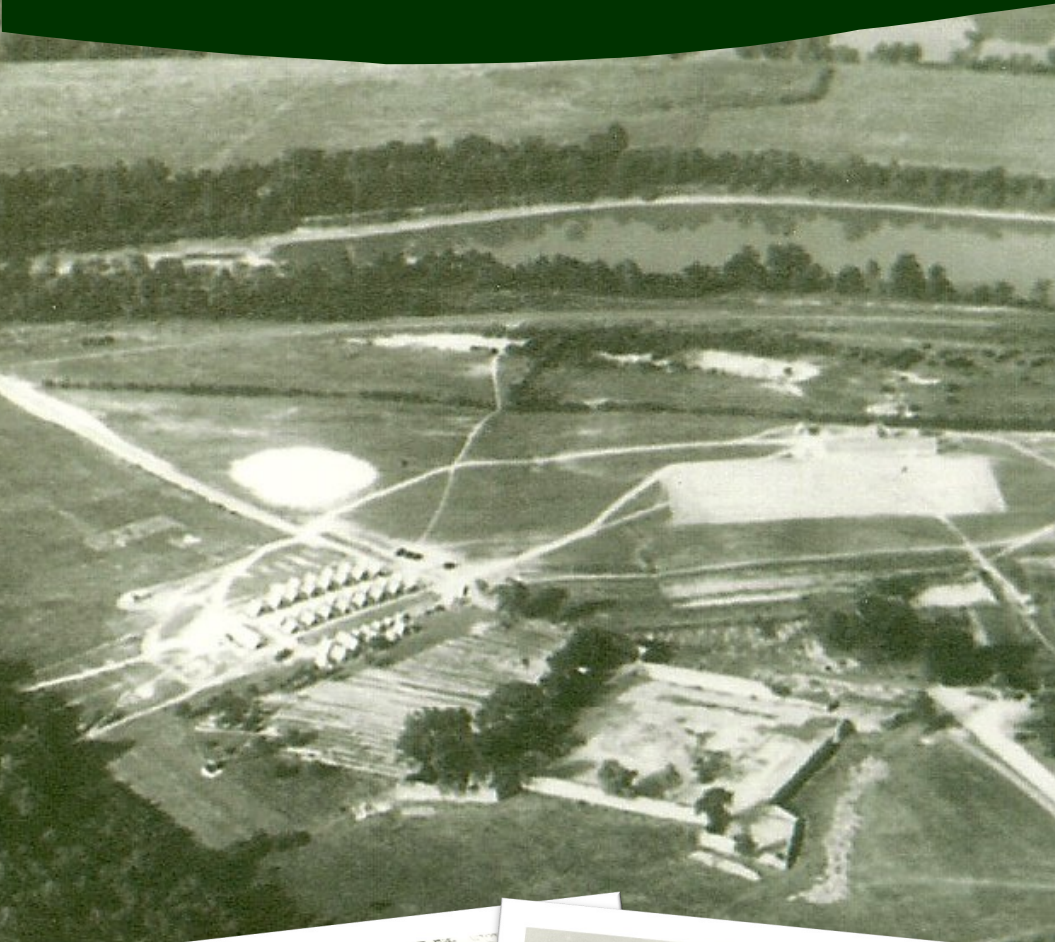


On the Trail of the Civilian Conservation Corps



Fort Frederick State Park



Fort Frederick State Park
11100 Fort Frederick Road
Big Pool, MD 21711

Park Information 301-842-2155 / Duty Ranger 443-805-1759



Maryland Park Service
dnr.maryland.gov/publiclands
customerservice@maryland.gov



The facilities and services of the Maryland Department of Natural Resources are available to all without regard to race, color, religion, sex, sexual orientation, age, national origin or physical or mental disability. This document is available in alternative format upon request from a qualified individual with a disability.



Welcome to Company 1353 of the Civilian Conservation Corps (CCC) stationed at Old Fort Frederick. As new men of the company you will need to get to know the camp. Your quest is to learn as much as you can about the camp by following simple compass directions and taking on some challenges.

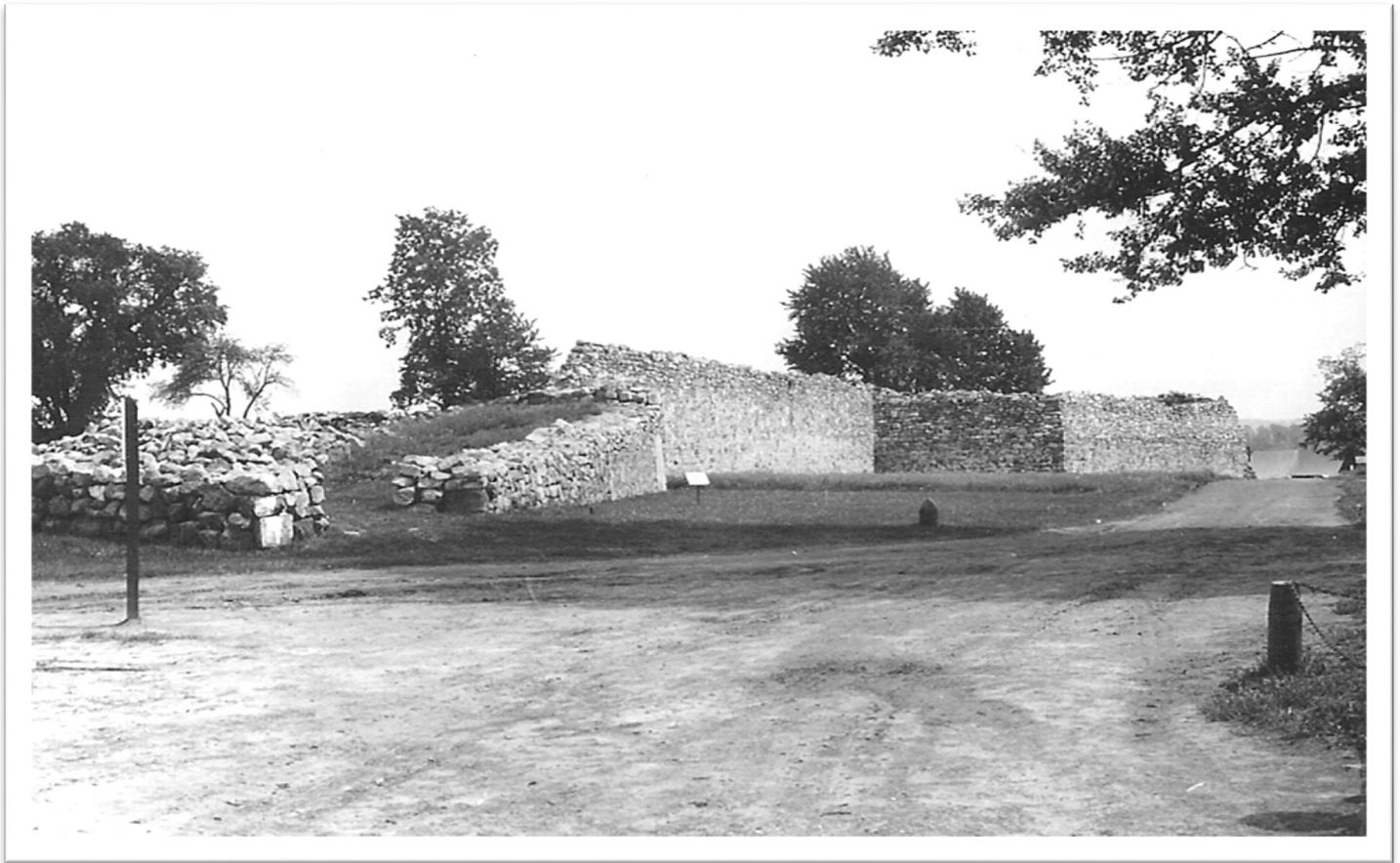
If you wish, you may watch the 10 minute orientation film at the Visitor Center before starting your quest.

To get started, follow the path outside the visitor center to the left. Stop #1 is located at the end of the path by the park road. (Stops are located at wooden posts with the corresponding number) From then on you will use compass direction to find your way. A map has also been provided at the back of the booklet that will help you in navigating the camp if you get stuck.



Finding Compass Bearings:

A compass is marked with 360 degree markings. North is 0 degrees or 360 degrees. South is 180 degrees. East is 90 degrees while west is 270 degrees. To use the compass for your assignment: hold the compass in the palm of your hand and against your chest so that it is sitting level. Stand in a relaxed, comfortable position, face the degree direction on the compass to find your next stop. Look down at the compass and allow the compass to settle and mark north. The arrow is pointing north. Then walk in the direction of the degree indicated from the last stop.



Stop #1: The camp at old Fort Frederick was established to restore two of Maryland's historical treasures. Of course the fort in front of you is one. It was built in 1756 to defend Maryland's frontier against attack during the French and Indian War. The other historical treasure is located near Boonsboro, Maryland and was the first monument dedicated to the Father of our Country. See if you can unscramble its name below:

ngtonwsahi ounmment

Hint: It also required skilled masons to restore.



Follow compass bearing 120 degrees to Stop #2.



Stop #2: The project at Fort Frederick is numbered CCC Camp SP #1 for State Park #1 in Maryland. It is administered by the National Park Service and began to lay out one of Maryland's First State Parks. The buildings in front of you, constructed by the CCC, will serve as a residence for the park's superintendent. From left to right they are his house (now the park store), blacksmith shop, stable and garage. The blacksmith shop was used to create the iron hardware for the fort's restoration.



Follow compass bearing 265 degrees to Stop #3.



Stop #3: The buildings for the CCC camp are simple wooden frame structures covered with tarpaper. In the background of this photograph is one of the tool sheds for equipment to do the work at the camp. It was originally located along the entrance road, but has been moved behind the stable by the Friends of Fort Frederick State Park (www.friendsoffortfrederick.info) and is the only remaining camp building from the 1930's.

Complete the word find, in it you will find some of the tools that were kept in the tool shed.

Once you complete the word find, proceed to the tool shed.

K X O Z O W K N C L G
 X J U F J H G I F V T
 N V J C L E W W N E B
 Z X W Y C E P V R A K
 K W Z C T L V O V G Q
 D O T C U B B O F U M
 U T H M U A W T H K L
 U C M P T R P L C S E
 M E J Z T R L I I X V
 T A V V R O P A Y H E
 F Z S L E W O R T E L

LEVEL PICK PLUMMET

SHOVEL TROWEL

WHEELBARROW



Follow compass bearing 270 degrees from the Southeast corner of the CCC Tool Shed to Stop #4.



Stop #4: There are three barracks in the camp. When you reach stop #4 turn around and look up the hill the way from which you came. The barracks are around you in this spot. It is up to you to keep your bunk, uniforms and personal belongings clean, and in good order in order to pass inspection.

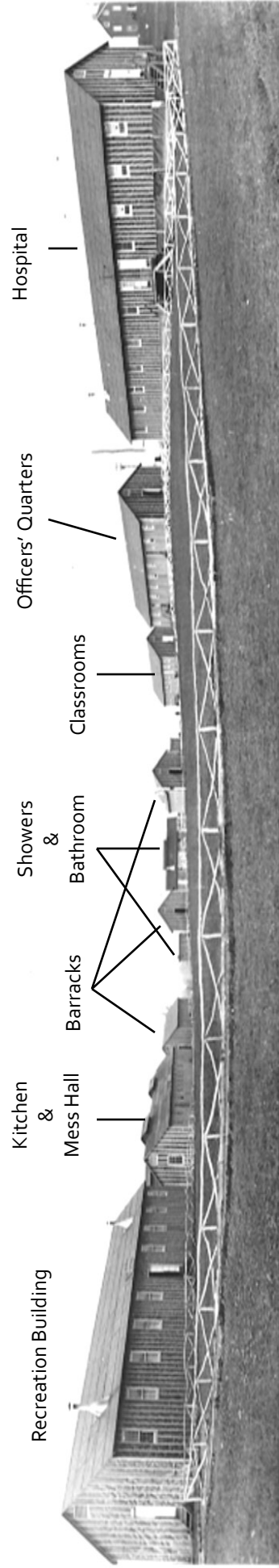
As you walk along the path you may notice the remains of the CCC Camp. Please keep in mind that it is against the law to touch or remove historical artifacts from Maryland State Parks.



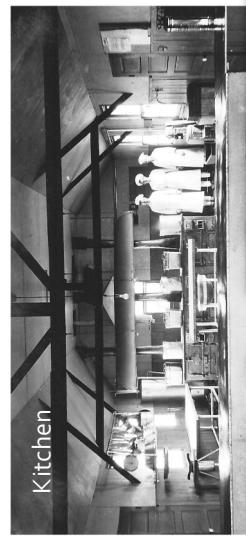
Leave no Trace Principle: Leave what you find.
Take only Pictures leave only footprints



Follow the path through the woods to the other end to find Stop #5



Stop # 5: From here you can see the entire camp in front of you. In the picture the camp building on the right would have stood where the park store is today. The two story log building to the North.



Kitchen

Kitchen
53rd Co. CCC. Camp SP-#1-Md.
Big Pool, Maryland.



Recreation Building



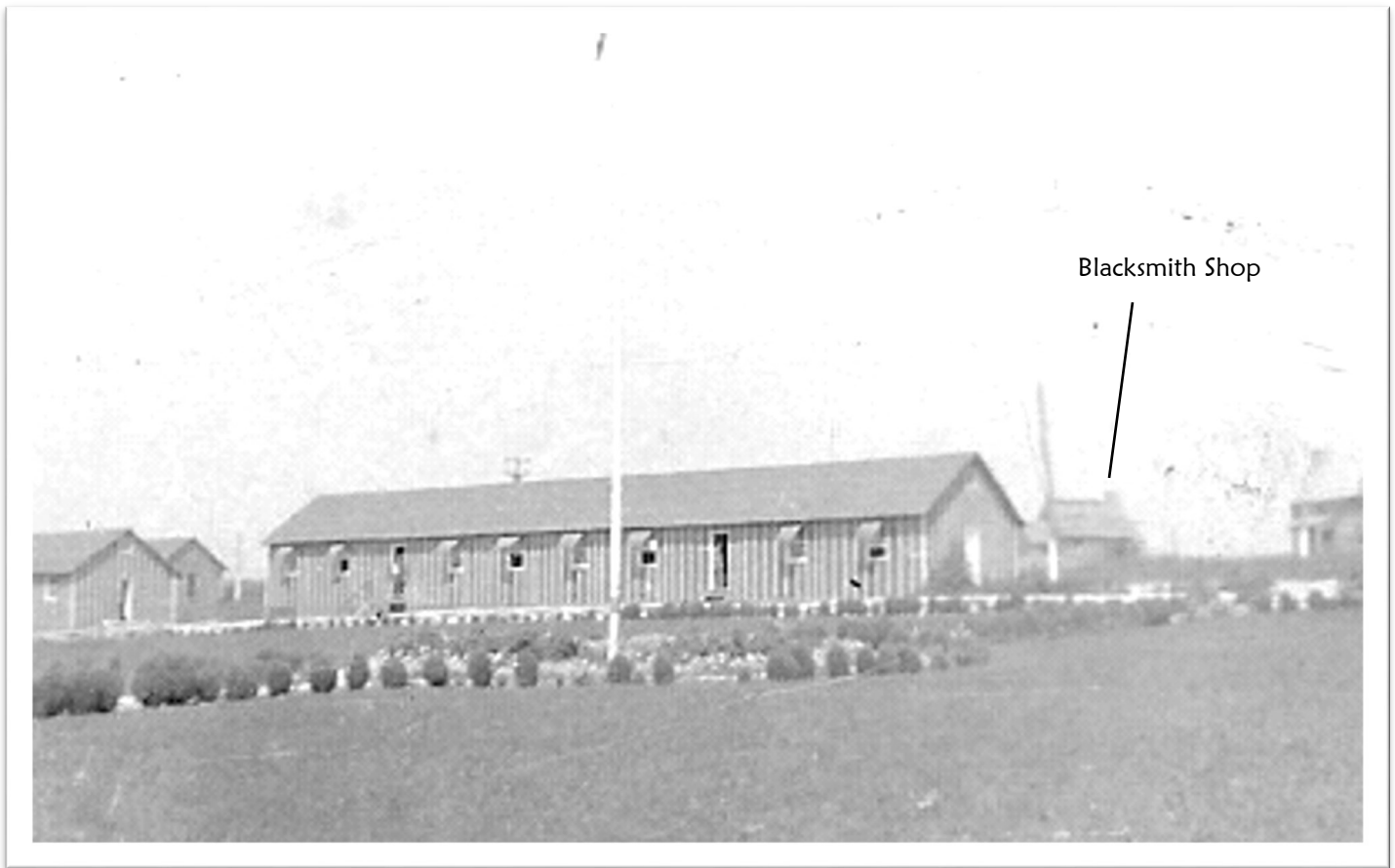
Mess Hall

Mess Hall
53rd Co. CCC. Camp SP-#1-Md.
Big Pool, Maryland.

Good manners and fair play are two traits that every member of the CCC is expected to have. On the lines below, list two good manners you should have at the mess hall and two things you can do to make sure you are playing fair in the recreation building:



Follow compass bearing 145 degrees to Stop #6.

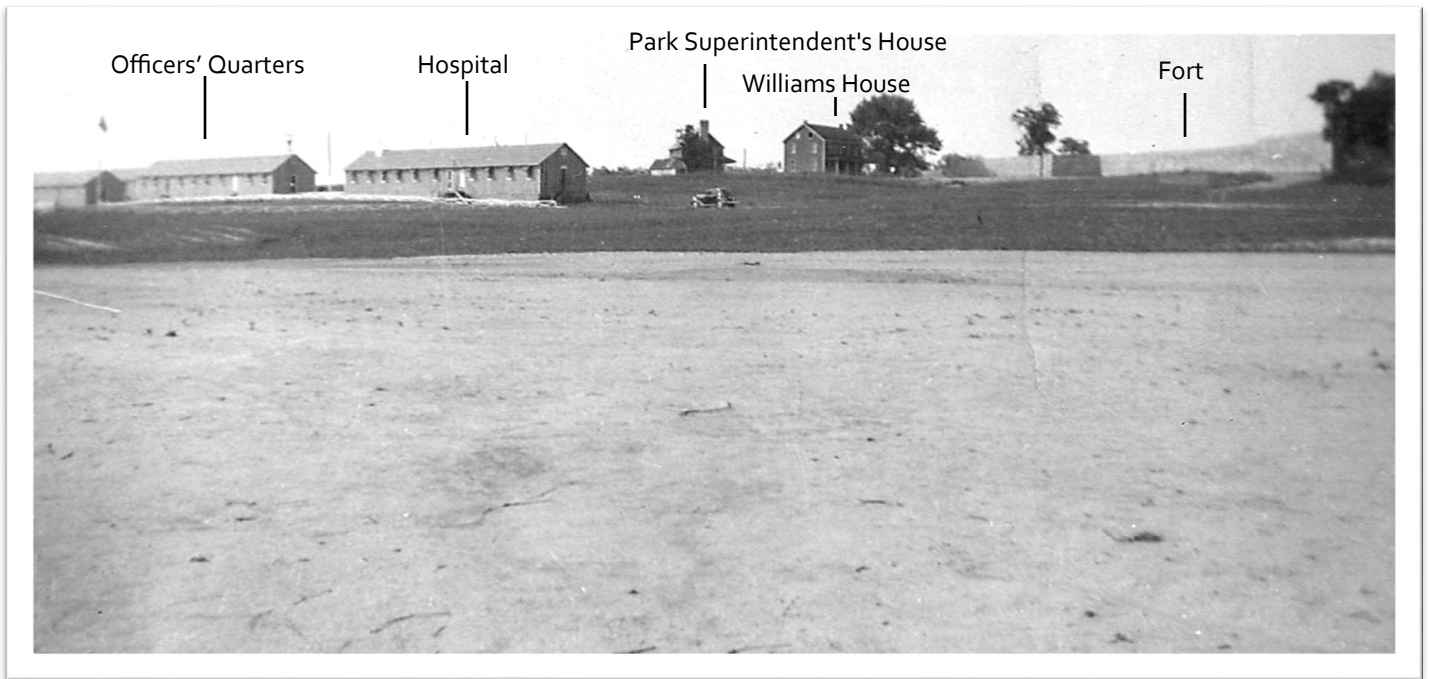


Blacksmith Shop

Stop #6: Orient the photograph with the back of the blacksmith shop at the top of the hill. To its left is the officers' quarters. Captain Carger is the commanding officer and Lieutenant Jung is second in command of the company. They are responsible for the operation of the camp and the conduct of the enrollees. Every aspect of camp life falls under their watchful eyes including discipline, records, reports, safety, education of the men and even the preparation of the food in the kitchen.



Follow compass bearing 130 degrees to Stop #7.



Stop #7: When you are not working you are expected to keep yourself busy and out of trouble. Some camps even have sports teams. At Fort Frederick there is a baseball team. Right now you are standing on home plate. Orient the picture with the Superintendent's House (now the park store) to get a feel for the 1930s.

In the box you should find some tennis balls. Take some time to play a game of toss. You could also pretend to run the bases for fun. Please return the balls when you are done. Thank you.



Follow compass bearing 30 degrees to Stop #8.



Stop #8: This building, when finished, will serve as the visitor center for the park. It is designed to reflect rustic log and stone buildings that would have been built during the colonial time period on Maryland's frontier.

Today it houses the Civilian Conservation Corps Museum for the park. Please take some time to explore the museum while you are here.



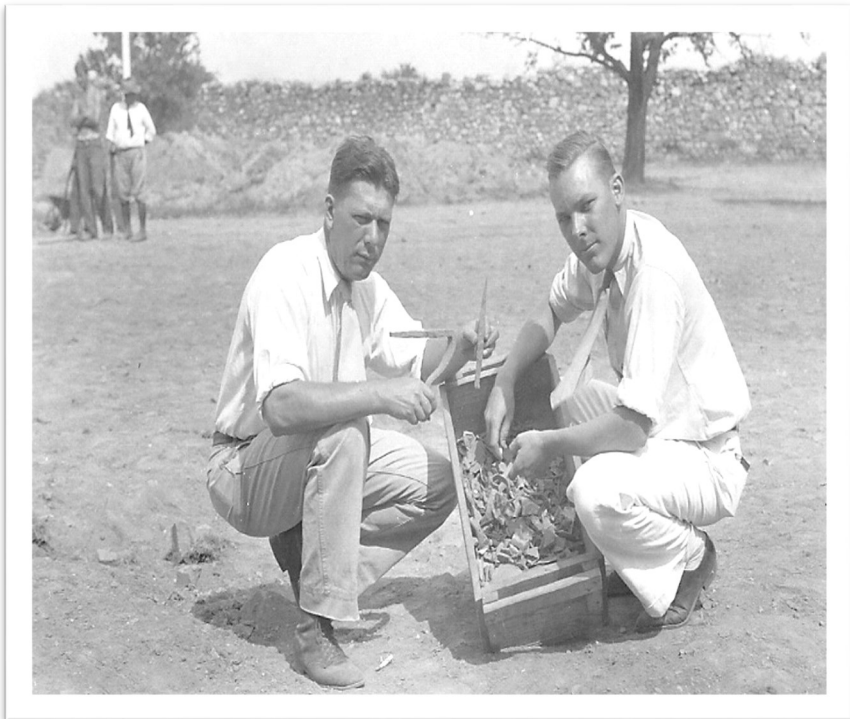
Follow compass bearing 30 degrees to Stop #9, at the fort gate..



Stop #9: When the camp was first established the company lived in army tents located just south of the fort's gate. The CCC is administered by the War Department through the Army so you will be living like you are in the army. The Army is in charge of camp discipline, education, and recreation. They compile statistics and maintain records of the CCC men and camp administration.



Follow compass bearing 290 degrees to Stop #10.



*Daily Mail Newspaper
Monday, July 16, 1934*

*During the last week, CCC
Workers have unearthed two
six-pound cannon balls of the
type used during the
Revolutionary War period, a
number of the metal buttons
and pieces of pottery...*

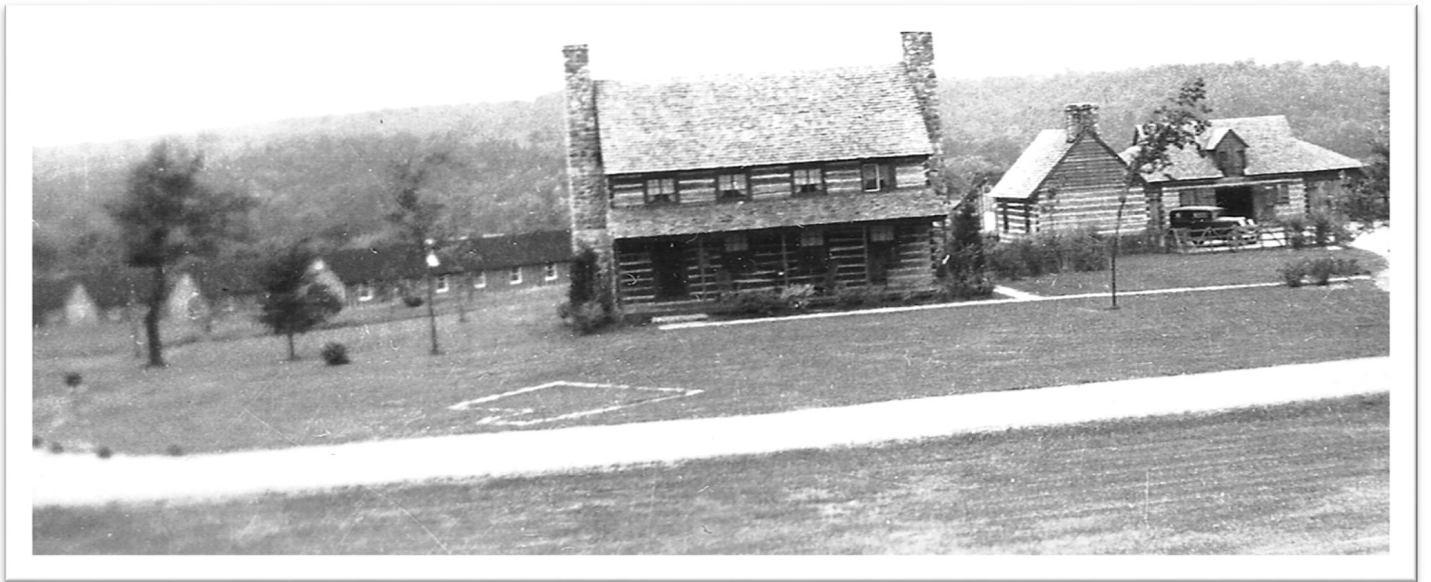


Stop #10: The National Park Service and the CCC conducted archeological digs while reconstructing the walls of the fort. Much of what was found during those digs is now on display in the Park's museum in the Visitor Center*.

*after completion of the new Visitor Center museum exhibit



Congratulations, you have navigated your way through the camp.



Mystery Stop:

Hint: You should already know who will live in the house.

Hint: Notice the camp in the background.

Hint: A "cat" would like to "walk" on the thing you need to use to see the view.

From where did you see the mystery stop:



Once you have completed your visit to the fort go to that location to sign in for park quest and get your stamp (if closed go the visitor center). Hurrah, you finished the quest. Thanks for coming to Fort Frederick State Park

Answer Key

Fair is fair...please use these only if you get stumped...

Stop #1: Washington Monument

Stop #3: **Solution**

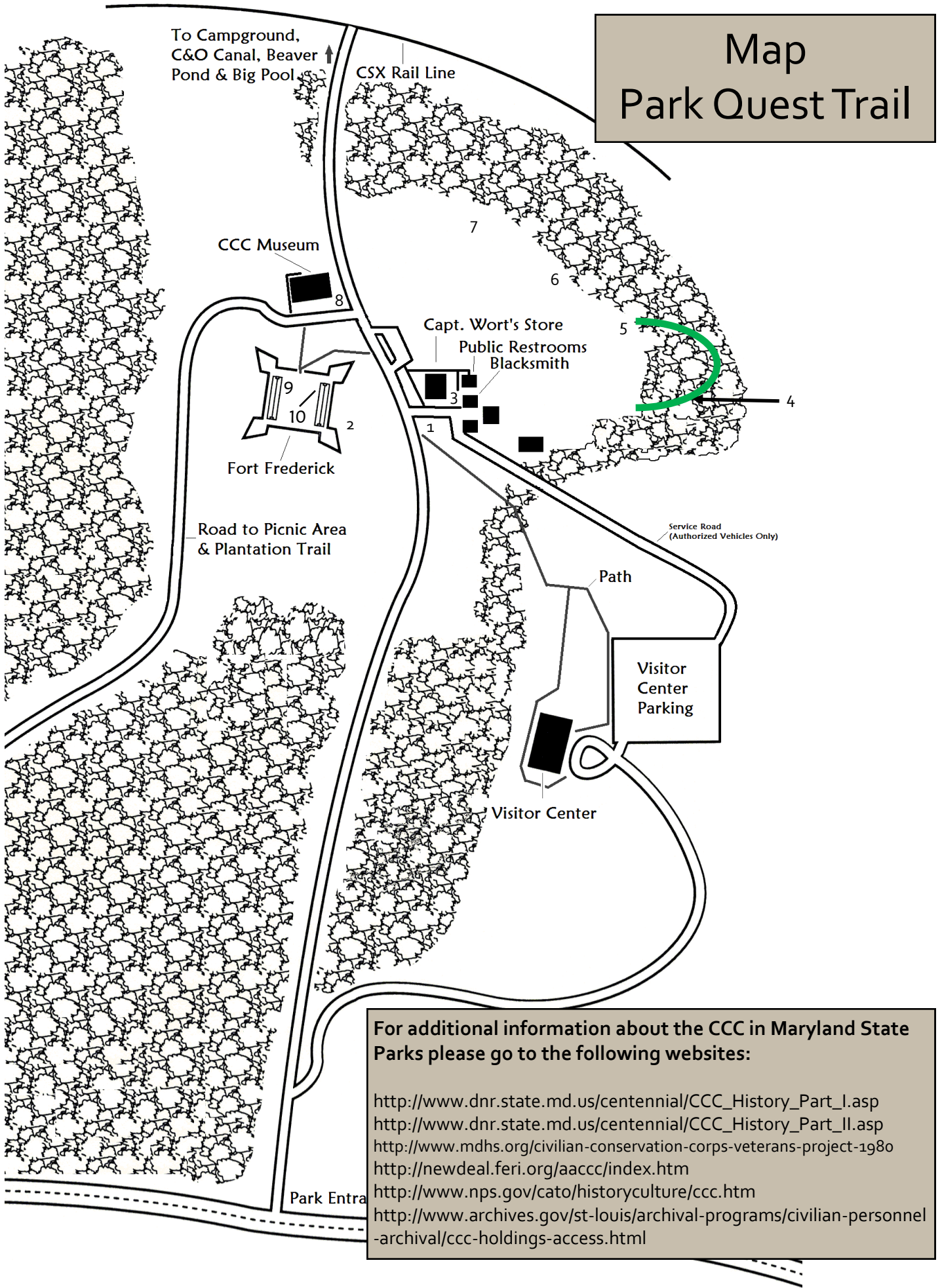
```
+ + + + + W + + + + +
+ + + + + H + + + + +
+ + + + + L E + + + + +
+ + + + + E P + + + + +
+ + + + + L V + + + + +
+ + + + + U B + O + + +
+ + + M + A + + H K L
+ + M + + R + + C S E
+ E + + + R + I + + V
T + + + + O P + + + E
+ + + L E W O R T + L
```

```
(Over,Down,Direction)
LEVEL(11,11,N)
PICK(7,10,NE)
PLUMMET(7,4,SW)
SHOVEL(10,8,NW)
TROWEL(9,11,W)
WHEELBARROW(6,1,S)
```

Stop #5: Adults you know what to tell the kids. Any and all good manners and fair play rules apply.

Mystery Viewing Location: The catwalk behind the west barracks.

Map Park Quest Trail



For additional information about the CCC in Maryland State Parks please go to the following websites:

- http://www.dnr.state.md.us/centennial/CCC_History_Part_I.asp
- http://www.dnr.state.md.us/centennial/CCC_History_Part_II.asp
- <http://www.mdhs.org/civilian-conservation-corps-veterans-project-1980>
- <http://newdeal.feri.org/aacc/index.htm>
- <http://www.nps.gov/cato/historyculture/ccc.htm>
- <http://www.archives.gov/st-louis/archival-programs/civilian-personnel-archival/ccc-holdings-access.html>