



Caroline County Recreation *and* Parks

General James F. Fretterd Community Center
107 South 4th Street, Denton, MD 21629
410-479-8120 | carolinerecreation.org

October 24, 2022

Michael McQuarrie
Local Grants Administrator
Land Acquisition and Planning
Department of Natural Resources
580 Taylor Ave., E-4
Annapolis, Maryland 21401

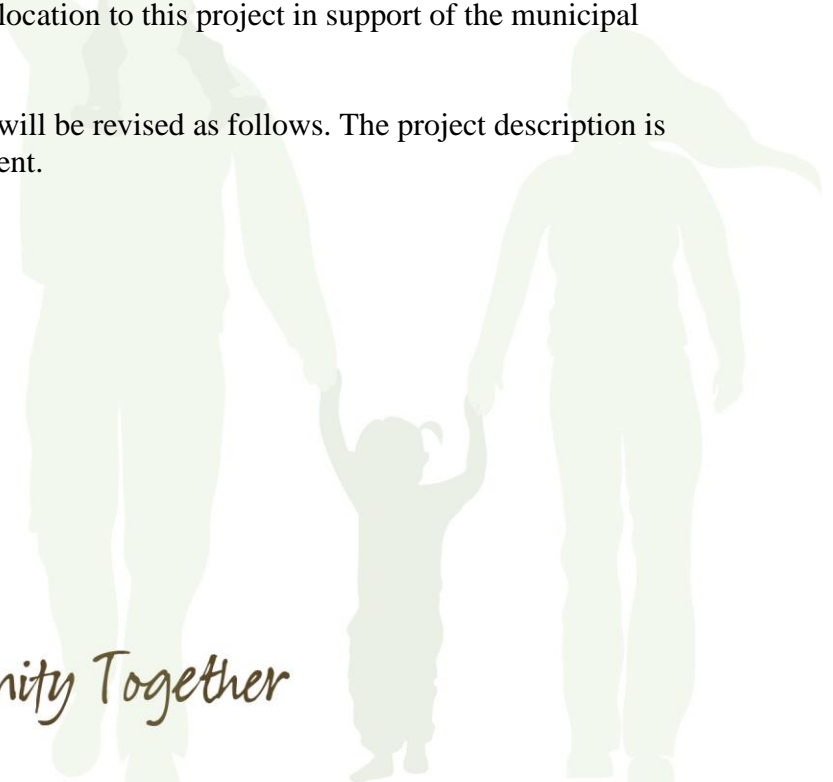
RE: FY2023 Annual Program Plan Amendment

Dear Michael,

Caroline County is amending the FY2023 Annual Program Plan to include a development application in support of a Town of Greensboro basketball court project located at Ober Community Park. The Community Parks and Playground FY2023 award to expand the paved court surfaces at the park did not anticipate the inflation and oil price escalators when the application was submitted in August 2021. We propose reducing the POS allocation to the Choptank Nature Park to accommodate the proposed 33,000 grant allocation to this project in support of the municipal project.

The table summary for development projects will be revised as follows. The project description is attached for amendment to the current document.

Bringing the Community Together



LPPRP Inventory Reference	Region	Project Location & Name	Project Acreage	Funding Sources			
				Local POS	General Fund	Other	TOTAL
84	N	North County Regional Park	207	82,723	9,191		91,914
44	S	Jonestown Community Park FY23	3.59	100,000	22,200	100,000	222,200
36	N	Henderson Community Park FY23	2.3	90,319	22,500	103,100	215,919
12	S	Choptank Nature Park FY23	12.6	41,441	4,605		46,046
58	N	Ober Community Park	3.97	33,140	3,682		36,822
34	S	Harmony Community Park FY23	3.1	50,000	19,300	123,700	193,000
FY2022 Development Total				397,623	81,478	326,800	805,901

Sincerely,



Susan C. Simmons
 Director
 Attachment:

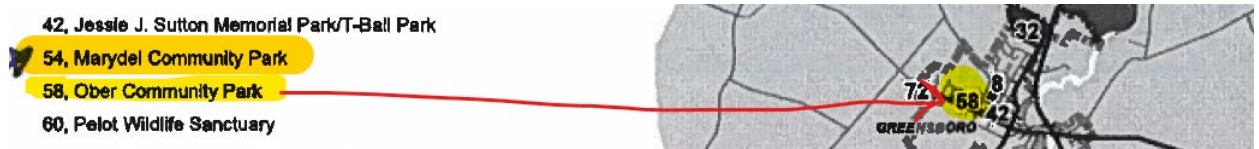
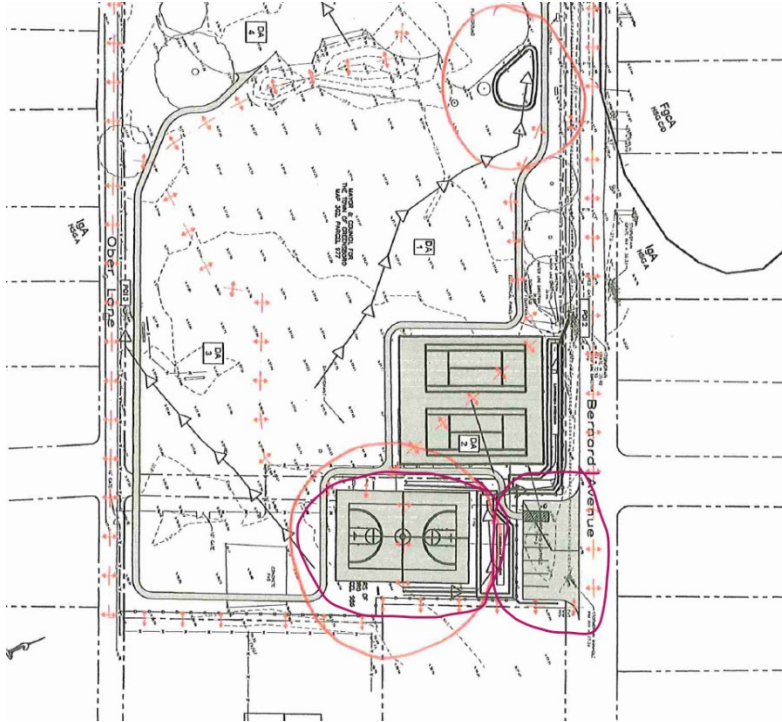


¹ The inventory reference corresponds with the regional map identifier in the 2022 LPPRP. These maps are

Bringing the Community Together

58 OBER COMMUNITY PARK

Project leverages Community Parks and Playground for FY2023 for the Town of Greensboro with local POS funds to provide the finish coating and lining of the new asphalt basketball court and the construction of a parking lot to support the new recreation asset.



42, Jessie J. Sutton Memorial Park/T-Ball Park

54, Marydel Community Park

58, Ober Community Park

60, Pelot Wildlife Sanctuary



CAROLINE COUNTY

Program Open Space Annual Program Plan FY2023

Submitted on September 23, 2022

Prepared and submitted in accordance with state mandates and guidelines as documented in the Program Open Space Grants Manual. This Annual Program conforms to the Caroline County Comprehensive Plan and the 2022 Caroline County Land Preservation Parks and Recreation Plan.

Susan C. Simmons
Caroline County Recreation & Parks Director

Ross Harper
Caroline County Recreation & Parks Advisory Board President

The 2022-23 Annual Program presents a detailed plan for Caroline County’s investment of Program Open Space to expand and rehabilitate existing public park facilities within the exclusive jurisdiction of the county and/or in partnership with incorporated municipalities. The Program is consistent with the 2022 draft Caroline County Land Preservation, Parks and Recreation Plan (LPPRP), scheduled for amendment into the County Comprehensive Land Use Plan by September 2022. Both the LPPRP and this Annual Program are presented in partnership with the Caroline County Recreation and Parks Citizen Advisory Board.

The projects incorporated herein are also based on the following factors:

1. It is an on-going project that has been included in the previous plan.
2. It is a local POS allocation recommendation by the County to support park development efforts by an incorporated municipality and will likely be leveraged into a future Community Parks and Playgrounds grant request by the municipality.
3. The included project establishes a general geographic distribution balance of POS resources or project development capacity support by county professionals.
4. The county anticipates or acknowledges mounting support from the community, local and county elected officials and/or private funding or community partnership support for a specific project.

Although in total, the projects in the FY2022 Program Plan exceed the grant funding resources available to the county, the completion date projected for each project is noted in within each project title. Each of these projects are specifically referenced in the 2022 LPPRP in Chapter II in section 7. *Capital Improvement and Acquisition Priorities* (pp.74-77) and in Tables II-8, 11-9, 11-10 and II-11.

The Annual Plan does not include the FY2024 Community Parks and Playground applications from Caroline County municipalities. However, it does include the FY2023 general obligation bond appropriation as the Parks and Playground Infrastructure Funding established by the Maryland Legislature.

Project Summary Table: FY2023

LPPRP Inventory Reference	Region	Project Location & Name	Project Acreage	Funding Sources				Development Share
				Local POS	General Fund	Other	TOTAL	
84	N	North County Regional Park	207	200,000	25,000		225,000	
44	S	Jonestown Community Park FY23	3.59	100,000	22,200	100,000	222,200	
36	N	Henderson Community Park FY23	2.3	90,319	22,500	103,100	224,919	
12	S	Choptank Nature Park FY23	12.6	67,500	7,500		75,000	

¹ The inventory reference corresponds with the regional map identifier in the 2022 LPPRP. These maps are included as a reference at the end of this document.

34	S	Harmony Community Park FY23	3.1	50,000	19,300	123,700	193,000	
FY2022 Development Total				507,819	93,500	326,800	940,119	
New		Municipal Land acquisition - TBD		182,883			182,883	Acquisition Share
New 12	S	Acquisition (or easement) of village lot for improved pedestrian access to public waterfront area near Choptank Marina	0.3	8,000			8,000	
New 44	S	Adjoining parcel to existing park near Jonestown Park	1.1	67,200			67,200	
LPPR Plan (FY23 Encumbrance)				25,000			25,000	
FY2023 Acquisition Total			1.3	283,083			283,083	

Project Descriptions

83 NORTH COUNTY REGIONAL PARK

Development of the 207 acre waterfront parcel located north of Greensboro on the Upper Choptank River includes conservation design and construction to stabilize existing ditch erosion, completion of a forest and natural resources management plan, expansion of the preliminary public access points to the natural walking trails (Parking, wayfinding signs, limited trail construction) and a master plan process that balances future recreation asset development with resource protection and the community/agency capacity to manage the park.



North County Regional Park



36 HENDERSON COMMUNITY PARK

This is a capital reconstruction grant to restore an existing playground, additional tree planting, perimeter walking trail and a small multipurpose field. The Park was established in 1990 and has not undergone any significant improvements. Creating a safe pedestrian and cycling pathway from nearby neighborhoods is also an accessibility concern.

12 CHOPTANK NATURE PARK

This 12.6-acre parcel proposes the phased development of walking trail and a wildlife viewing station around the dredge disposal berms. *The final master development plan will include broad community and neighborhood review per the notification requirements of any development within Maryland Critical Area boundaries.* The project also includes a partnership with the Caroline Historical Society for the location is a historic building – eventually an interpretive center for the site and the Underground Railroad.

Land acquisition (red circle) or perpetual easement established on residential lot to facilitate pedestrian access from the parking area next to the 12-acre parcel to the Marina and general waterfront area. Contract negotiations have not begun with a property owner, so lot is not designated.



Choptank Nature Park and Choptank Marina

34 HARMONY COMMUNITY PARK

Construction of a new park picnic pavilion, restore perimeter walking trail and playground area is the objective of the modest park renovation, supported by a memorial gift from a local resident.



Harmony Community Park

44 JONESTOWN COMMUNITY PARK

Capital restoration includes updating existing playground equipment, installation of a basketball court, hard surface walking trails, clearing underbrush from wooded areas, and additional security lighting. Pedestrian access from neighborhood areas along Route 16 is a safety and accessibility issue.

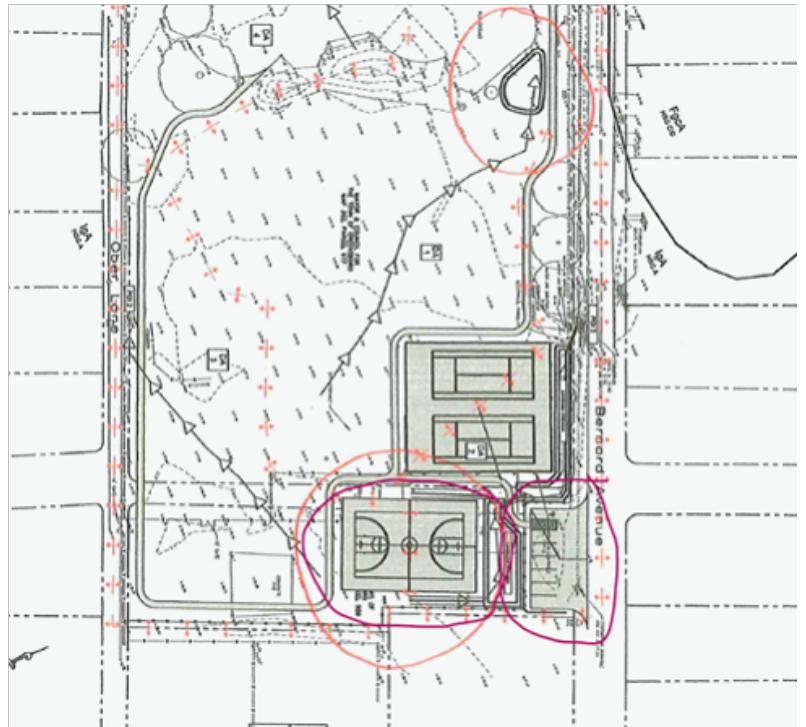
Land acquisition (*red circle*) to increase the public landholdings into the wooded area behind the park for enhanced trail access and stormwater catchment design beyond active use areas. No specific contract negotiations have begun with a property owner, so lot is not designated.



Jonestown Community Park

58 OBER COMMUNITY PARK

Project leverages Community Parks and Playground for FY2023 for the Town of Greensboro with local POS funds to provide the finish coating and lining of the new asphalt basketball court and the construction of a parking lot to support the new recreation asset.



LAND PRESERVATION, PARKS AND RECREATION MASTER PLAN

The 2022 Caroline County Plan will be amended to the County Comprehensive Land Use Plan by September 1, 2022. To continue the implementation of the park and preservation planning systems that will inform the development of the 2027 Plan, the county proposes the encumbrance of \$25K from its land acquisition allocation account.

CAROLINE COUNTY, MARYLAND LAND PRESERVATION, PARKS & RECREATION PLAN Recreation Sites

North County Region



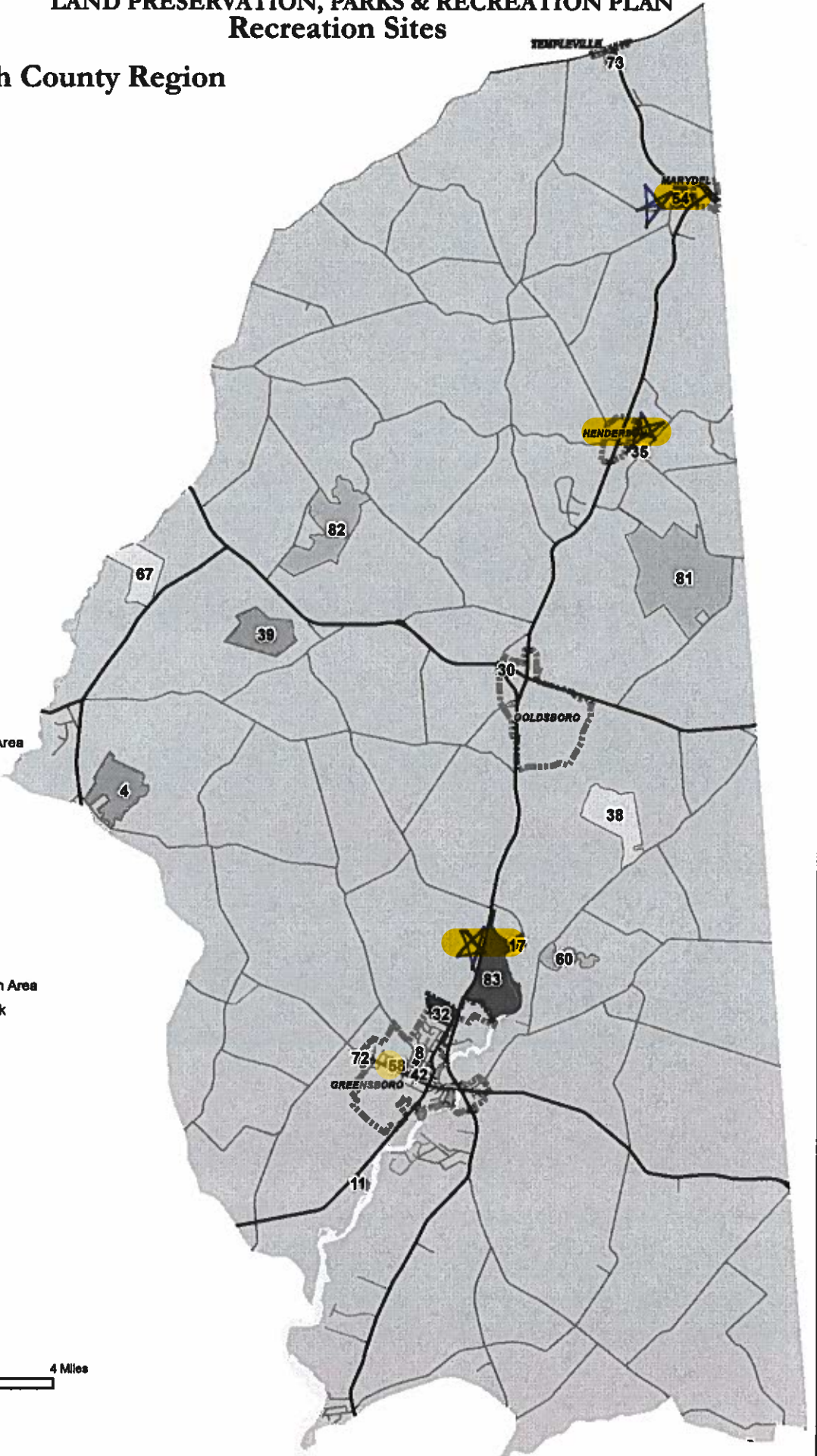
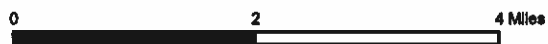
Recreation Facilities Regions

- Municipal Boundary
- Caroline County Parks And Recreation Facilities**
- County
- Municipal
- Private / Quasi-Public
- Private
- Board of Education
- State
- Recreation Facilities Regions**
- North
- West
- East
- South

Recreation Sites in this Region

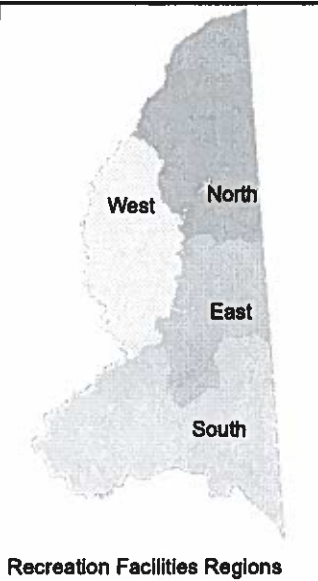
- 4, Bridgetown Ponds Heritage Conservation Area
- 8, Cedar Lane Park
- 11, Charles S. Bilbrough Jr. Memorial Park
- 13, Choptank River Park/Sunset Park
- 17, Christian Park
- 30, Goldsboro Park
- 31, Greensboro Boat Ramp and River park
- 32, Greensboro School Park
- 35, Henderson Community Park
- 38, Holiday Park Campground (Private)
- 39, Hollingsworth Pond Heritage Conservation Area
- 42, Jessie J. Sutton Memorial Park/T-Ball Park
- 54, Marydel Community Park
- 58, Ober Community Park
- 60, Pelot Wildlife Sanctuary
- 67, Schrader's Sporting Clays (Private)
- 72, Sunset Park West
- 73, Templeville Community Park
- 81, Nature Conservancy (Map 8)
- 82, Nature Conservancy (Map 7)
- 83, North County Regional Park

Note: Private Recreation sites on map are for illustrative purposes only. Acreage is not reflected in the inventory or parity/proximity analysis of this plan.



CAROLINE COUNTY, MARYLAND LAND PRESERVATION, PARKS & RECREATION PLAN Recreation Sites

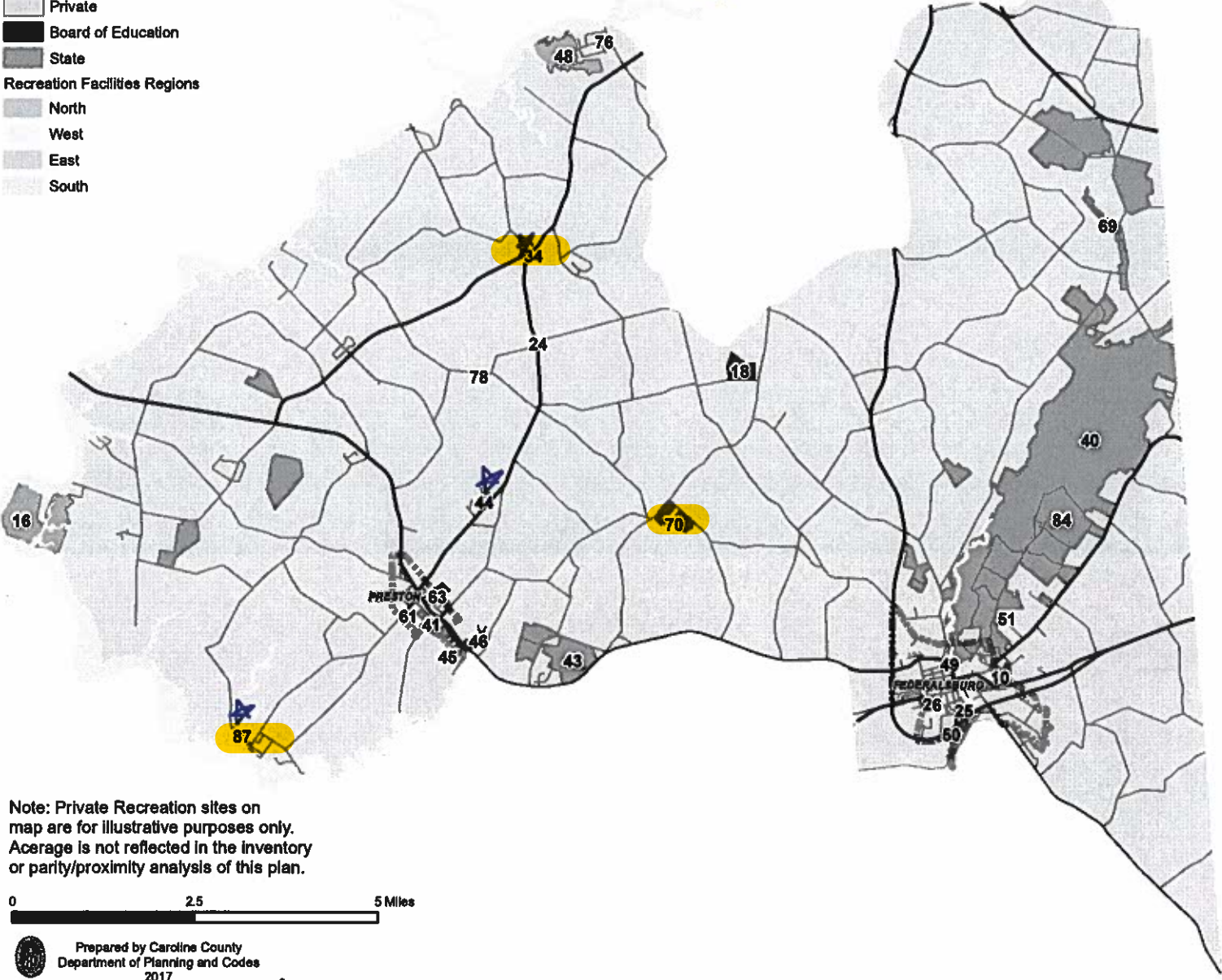
South County Region



Recreation Sites In this Region

- | | |
|---|---|
| <ul style="list-style-type: none"> 3, Austin Avenue Playground 10, Chambers Park 12, Choptank Marina 16, Choptank Wetlands Preserve 18, Colonel Richardson High School 19, Colonel Richardson Tomb / Gilpins Point 24, Dickinson's Tomb 25, Federalsburg Marina Park 26, Federalsburg School Park 28, Ganey's Wharf 34, Harmony Community Park 40, Idywild Wildlife Management Area 41, James T. Wright Memorial Park 43, John S Ayton Tree Nursery 44, Jonestown Community Park | <ul style="list-style-type: none"> 45, Linchester Mill 46, Linchester Mill Pond 48, Lynch Preserve (Private) 49, Marshyhope Rec Area North 50, Marshyhope Rec Area South 51, Marshyhope Rod and Gun Club (Private) 61, Preston Lions Club Park 62, Preston School Baseball Field 63, Preston School Park 69, Smithville Community Lake 70, South County Athletic Field Complex 76, Two Johns Landing 77, VFW Boat Ramp 78, Webb Fluharty Cabin 84, Chesapeake Forest Lands 87, Choptank Nature Park |
|---|---|

- Municipal Boundary
- Caroline County Parks And Recreation Facilities**
- County
- Municipal
- Private / Quasi-Public
- Private
- Board of Education
- State
- Recreation Facilities Regions**
- North
- West
- East
- South



Note: Private Recreation sites on map are for illustrative purposes only. Acreage is not reflected in the inventory or parity/proximity analysis of this plan.

