

Guide to Hunting Pocomoke State Forest

Pocomoke Forest is open to hunting and fishing in season. The hunting seasons in the State Forest conforms to standard hunting seasons adopted by state and federal regulations.

Check the Hunting and Trapping Guide (<https://dnr.maryland.gov/huntersguide/Pages/default.aspx>) for detailed information.

Pocomoke State Forest is a managed forest; therefore, hunters may encounter active logging jobs or other management activities. Because of these activities an assortment of dissimilar forest stand structures are present throughout the forest.

Game

Over 95% of the forest is classified as forestland and the prevailing game include **wild turkey, white-tailed deer**, and gray squirrels. Upland game birds and mammals are not as common but do provide for hunting opportunities. Populations of eastern cottontail rabbit, bobwhite quail, mourning dove, and American woodcock can be found in recently cutover areas and open-land habitats.

Aquatic habitats located within and surrounding the forest support several species of waterfowl. Open waters include the Pocomoke River, its tributaries, and several swamps/marshes. Wood ducks and mallards are the most common species found in these habitats.

Before hunting, know the rules:

- **You may only hunt in-season game.** Hunting rifles, handguns, shotguns, bows and muzzleloaders are permitted in accordance with state and federal laws (refer to current hunting regulations). Possession or use of weapons is prohibited in the State Forest outside of regular open hunting season.
- **You must possess a valid hunting license.** Full season license allows you to hunt all legal game birds and mammals without stamps, except deer during bow season, deer during muzzleloader season, migratory game birds, and furbearers. A Bonus Antlered Deer Stamp may also be used. **Furbearer** permit and permission to enter permit required for trapping, raccoon hunting and fox chasing.
- **Tree stands are limited to those of a temporary nature**, which must be removed or dismantled at the end of each day.
- **Target shooting is prohibited.**
- **It is unlawful to hunt any game bird or mammal on Sunday** at Pocomoke State Forest.

Disabled Hunter Access

Hunters with mobility impairments may obtain a special permit so they may hunt from a vehicle. Applications are available from the Maryland DNR Licensing & Registration Service. Hunting forms, applications, and FAQs can be found here: <https://dnr.maryland.gov/Pages/dnrforms.aspx>. The Application for the Universal Disability Pass for Persons with Disabilities (formerly "Permit to Hunt from a Vehicle") is located here: <https://dnr.maryland.gov/Documents/vehiclept.pdf>. A physician must certify your permit application. Vehicle hunters should contact the Pocomoke State Forest office before hunting. The Salisbury DNR Licensing office located at 251 Tilghman Road, Room #2, can be contacted at 410-713-3840.

Follow the rules below:

- Hunt from a stopped vehicle.
- Hunt within the designated boundaries.
- Display a universal disabled person symbol on the vehicle in a conspicuous place.
- Operate the vehicle with minimal amount of damage to the vegetation and terrain.
- Operate the vehicle in such a manner as to minimize the impact on other hunters and forest users.
- Abide by all other laws, rules, and regulations pertaining to hunting.
- Woods roads should not be used as shooting lanes.
- Do not block woods roads with vehicles.

Accessing the State Forest

- Walking, bicycling and horseback riding are allowed throughout the forest. Bikes and horses are not allowed on designated hiking trails.
- Parking areas are conveniently located throughout the forest adjacent to county maintained roads. The locations of these parking areas are shown on the included maps.

Public Hunting Opportunities on Chesapeake Forest Lands

Numerous Chesapeake Forest tracts are available for public hunting within close proximity to Pocomoke State Forest. Tracts with public hunting near or bordering Pocomoke State Forest are:

- W53 – Twigg-Fooks
- WR11 – Shockley
- WR18 – Buck Harbor
- WR21 – Bethards
- WR22 – Whitesburg
- WR24 – Johnson & Johnson
- WR25 – Creek
- WR45 – Foster Estate

Directions and maps for these Chesapeake Forest tracts are located here:

<https://dnr.maryland.gov/forests/Pages/chesapeakeforests-maps-directions.aspx>

Please refer to special COMAR regulations for the Chesapeake Forest:

<https://www.dsd.state.md.us/comar/getfile.aspx?file=08.01.07.04.htm>.

Camping

Camping is only permitted at designated areas of Shad Landing, Milburn Landing, or Blades Road/Mattaponi Ponds. For more information on camping contact Pocomoke River State Park at 410-632-2566 or visit our web site at <https://dnr.maryland.gov/publiclands/Pages/eastern/pocomokeriver.aspx>.

.....
**To report violations or
in case of an emergency call:**

FOREST WATCH

1-800-825-7572
.....

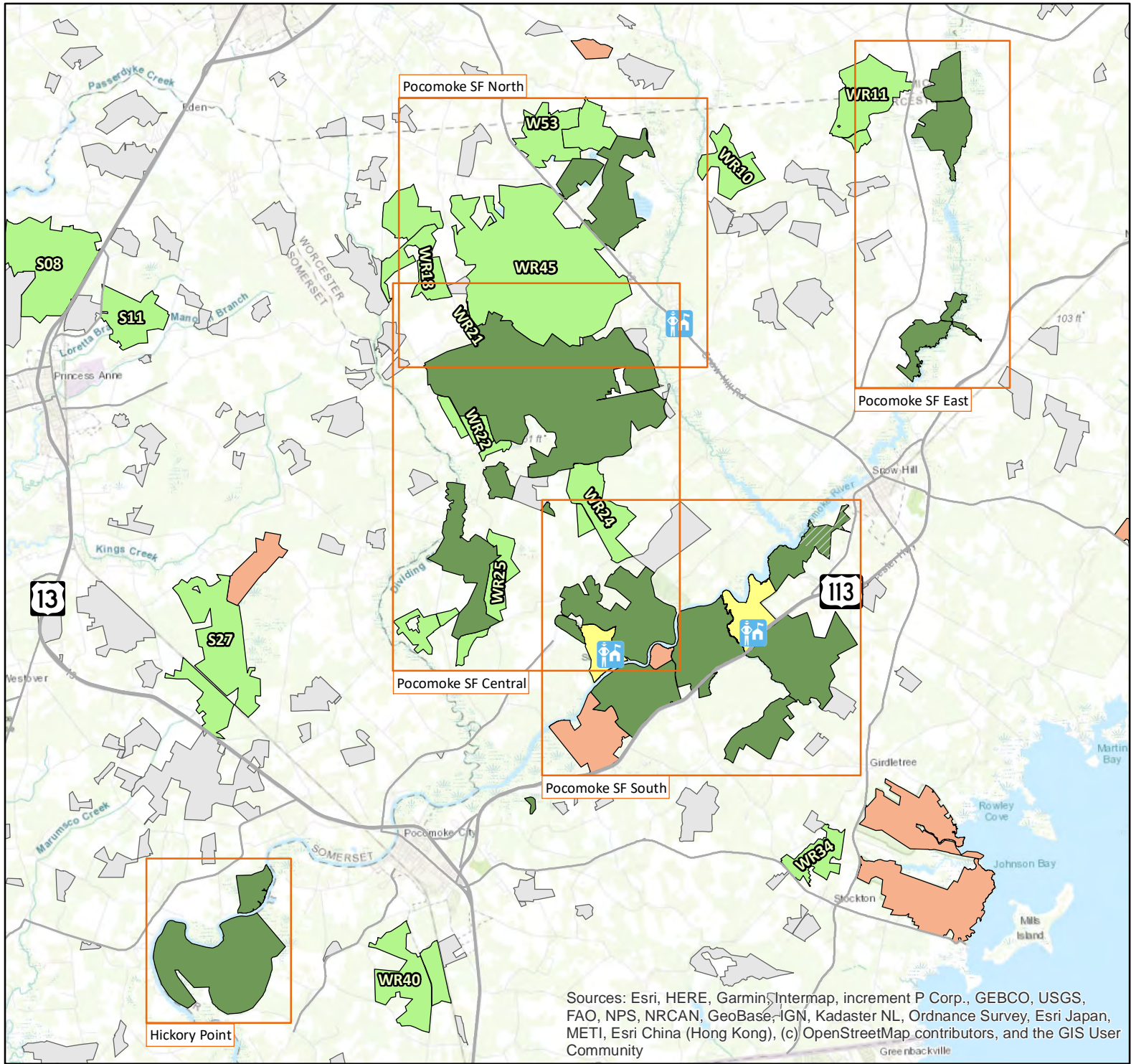
The facilities and services of the Maryland Department of Natural Resources are available to all without regard to race, color, religion, sex, sexual orientation, age, national origin or physical or mental disability. Call toll free in Maryland 1-877-620-8DNR ext. 8780, TTY via Maryland Relay: 711 (within Maryland), 1-800-735-2258 (out of state) or visit <https://dnr.maryland.gov>. Accommodations for individuals with disabilities will be provided upon request. Seven days advance notice is requested.

.....
Pocomoke State Forest





6572 Snow Hill Road

Snow Hill, Maryland 21863



Office: 410-632-3732 Fax: 410-632-3730
.....

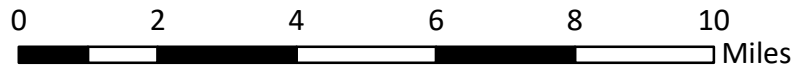


Legend

-  Office
-  Pocomoke State Forest
-  State Park
-  Wildlife Management Area

Chesapeake Forest

-  CF Public Hunting Tracts
-  CF Tracts Not Open for Public Hunting

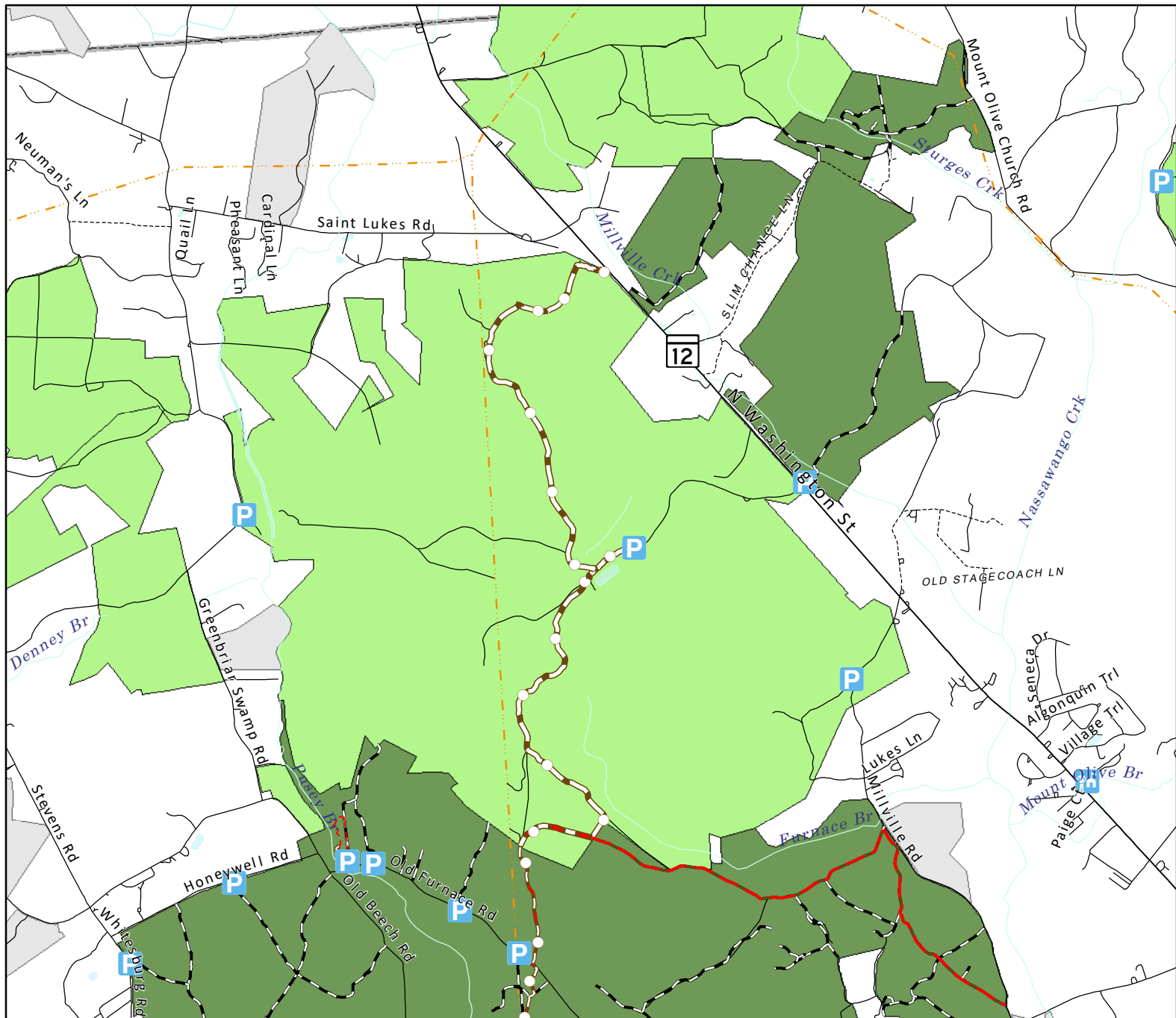


State Forest Office: 1-410-632-3732
 Forest Watch: 1-800-825-7275
 Natural Resources Police
 (Emergencies): 1-410-260-8888

GENERAL LOCATION MAP

See Individual Maps For Detail





Legend

Roads & Trails

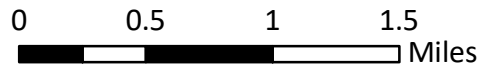
- Forest Road
- Algonquin/Red Furnace
- Pusey Branch - Red
- Pusey Branch - White
- Red Furnace

- Boat Ramp
- Disabled Hunter Access
- Office
- Parking Area
- Public Phone

- Pocomoke State Forest
- State Park
- Wildlife Management Area

Chesapeake Forest

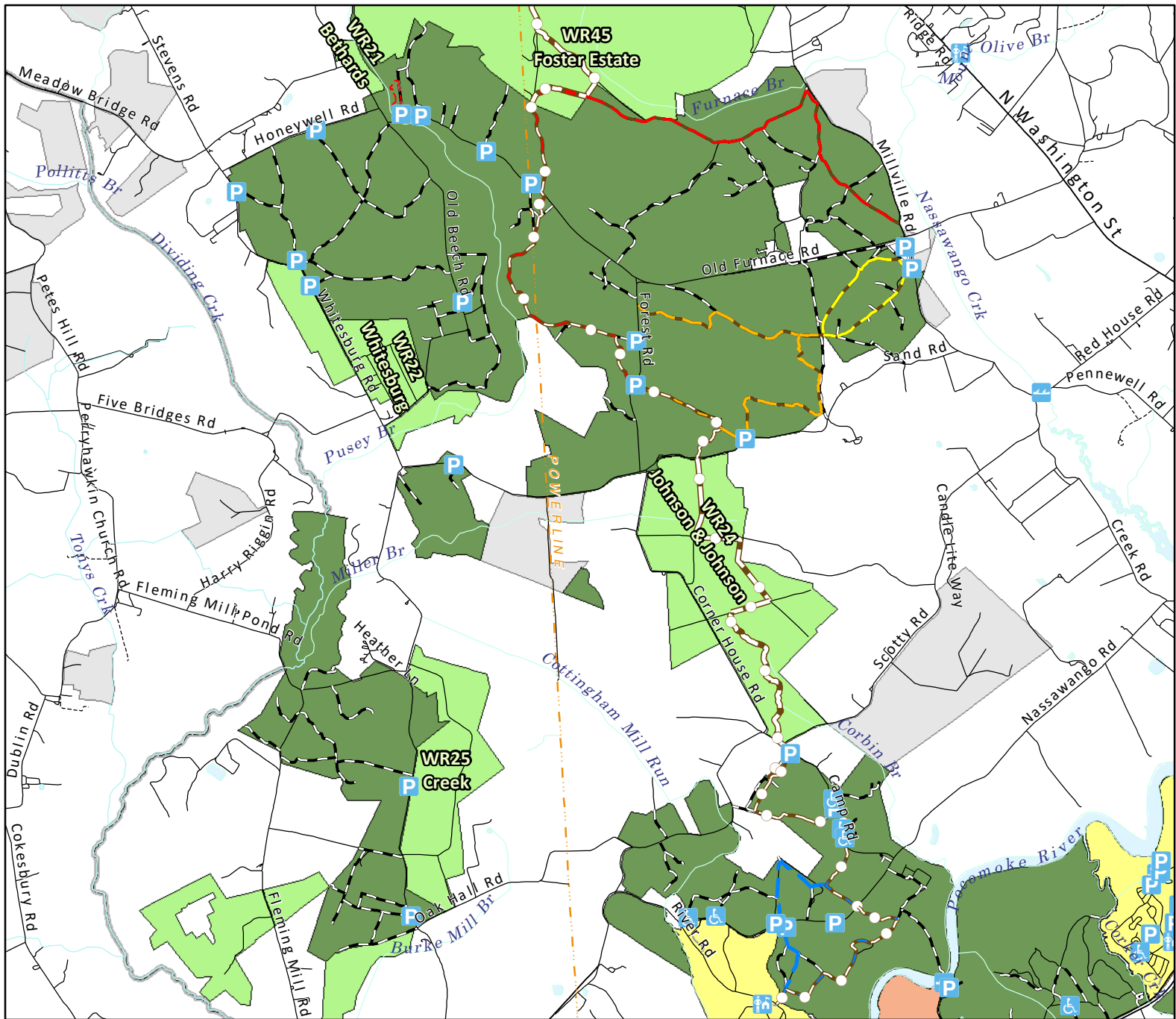
- CF Public Hunting Tracts
- CF Tracts Not Open for Public Hunting



State Forest Office: 1-410-632-3732
 Forest Watch: 1-800-825-7275
 Natural Resources Police
 (Emergencies): 1-410-260-8888

POCOMOKE SF NORTH





Legend

Roads & Trails

- Forest Road
- Road
- Algonquin
- Algonquin/Milburn
- Algonquin/Orange Furnace
- Algonquin/Red Furnace
- Milburn
- Orange Furnace
- Pusey Branch
- Red Furnace
- Yellow Furnace

- Boat Ramp
- Disabled Hunter Access
- Office
- Parking Area
- Public Phone
- Soft Launch

- Pocomoke State Forest
- State Park
- Wildlife Management Area

Chesapeake Forest

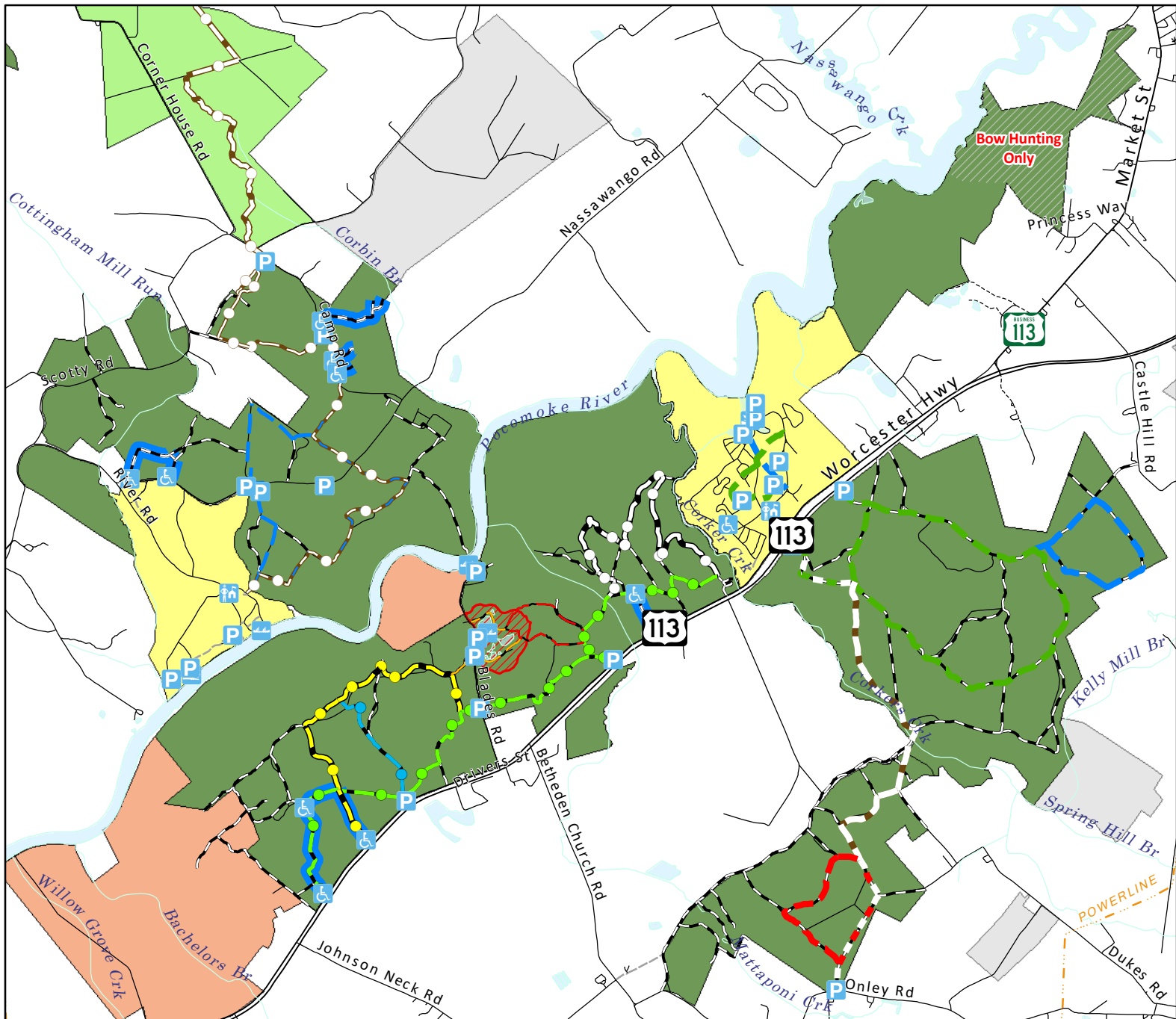
- CF Public Hunting Tracts
- CF Tracts Not Open for Public Hunting



State Forest Office: 1-410-632-3732
 Forest Watch: 1-800-825-7275
 Natural Resources Police
 (Emergencies): 1-410-260-8888

POCOMOKE SF CENTRAL





Legend

Roads & Trails

- Forest Road
- Road
- Disabled Hunting
- Algonquin
- Algonquin/Milburn
- Blades
- Blades Loop
- Blue
- Blue Bike

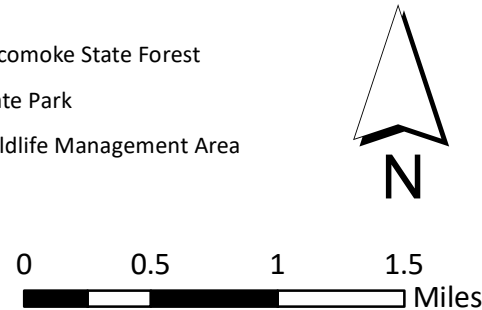
- Green
- Green Bike
- Milburn
- Red
- Red/White
- White
- White Bike
- White/Green
- Yellow Bike

- Boat Ramp
- Disabled Hunter Access
- Office
- Parking Area
- Soft Launch
- Safety Zone - No Hunting

Chesapeake Forest

- CF Public Hunting Tracts
- CF Tract Not Open for Public Hunting

- Pocomoke State Forest
- State Park
- Wildlife Management Area



State Forest Office: 1-410-632-3732
 Forest Watch: 1-800-825-7275
 Natural Resources Police
 (Emergencies): 1-410-260-8888

POCOMOKE SF SOUTH





Legend

Roads & Trails

- Forest Road
- Blue Bike
- Disabled Hunting
- Algonquin/Milburn
- Blades
- Blades Loop
- Green Bike
- White Bike
- Yellow Bike

- Campsites
- Campsites-Group
- Disabled Hunter Access
- Parking Area
- Soft Launch
- Safety Zone - No Hunting

Chesapeake Forest

- CF Public Hunting Tracts
- CF Tract Not Open for Public Hunting

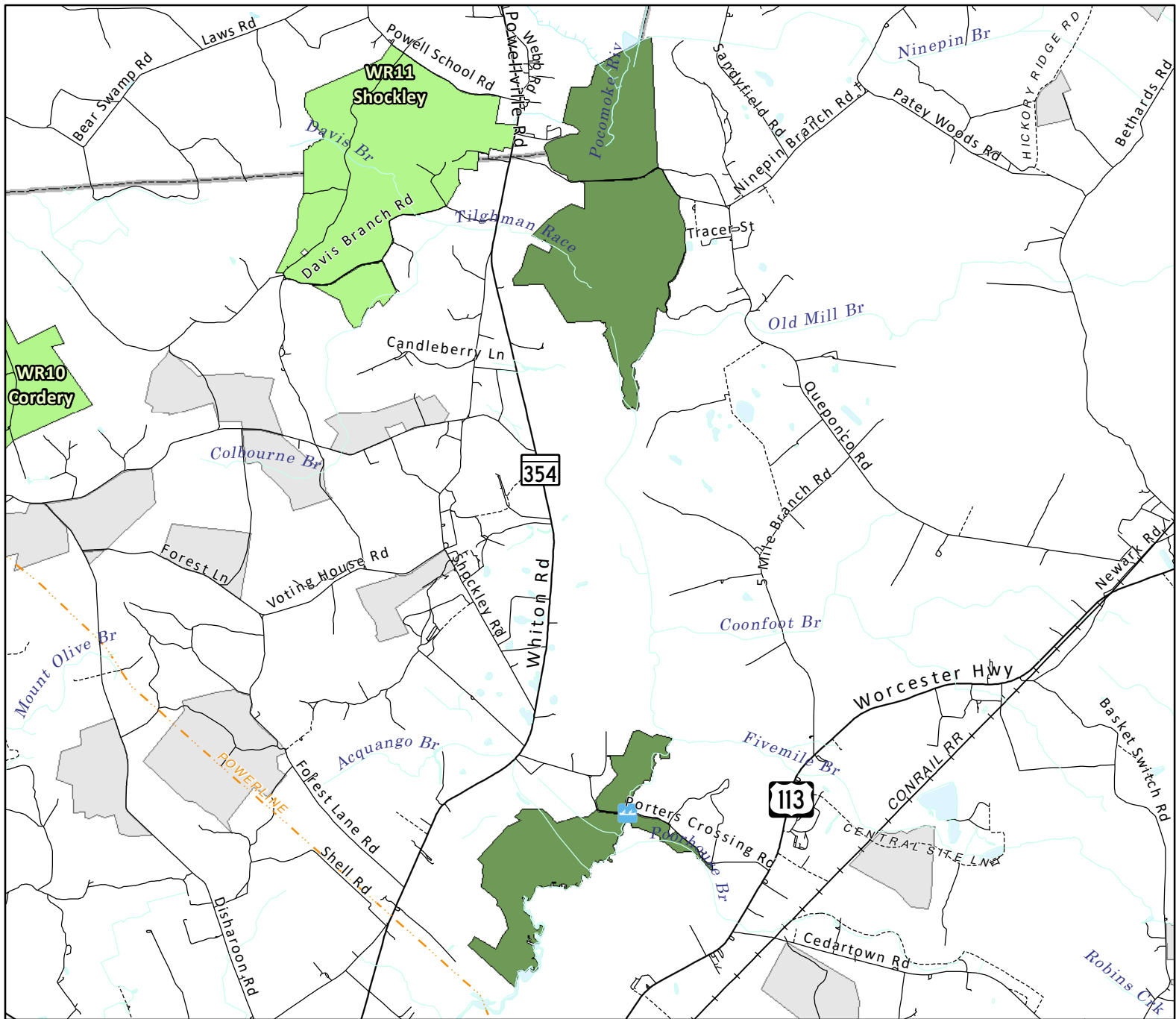
- Pocomoke State Forest
- State Park
- Wildlife Management Area






State Forest Office: 1-410-632-3732
 Forest Watch: 1-800-825-7275
 Natural Resources Police
 (Emergencies): 1-410-260-8888

POCOMOKE SF BLADES ROAD







Legend

-  Pocomoke State Forest
-  State Park
-  Wildlife Management Area

Chesapeake Forest

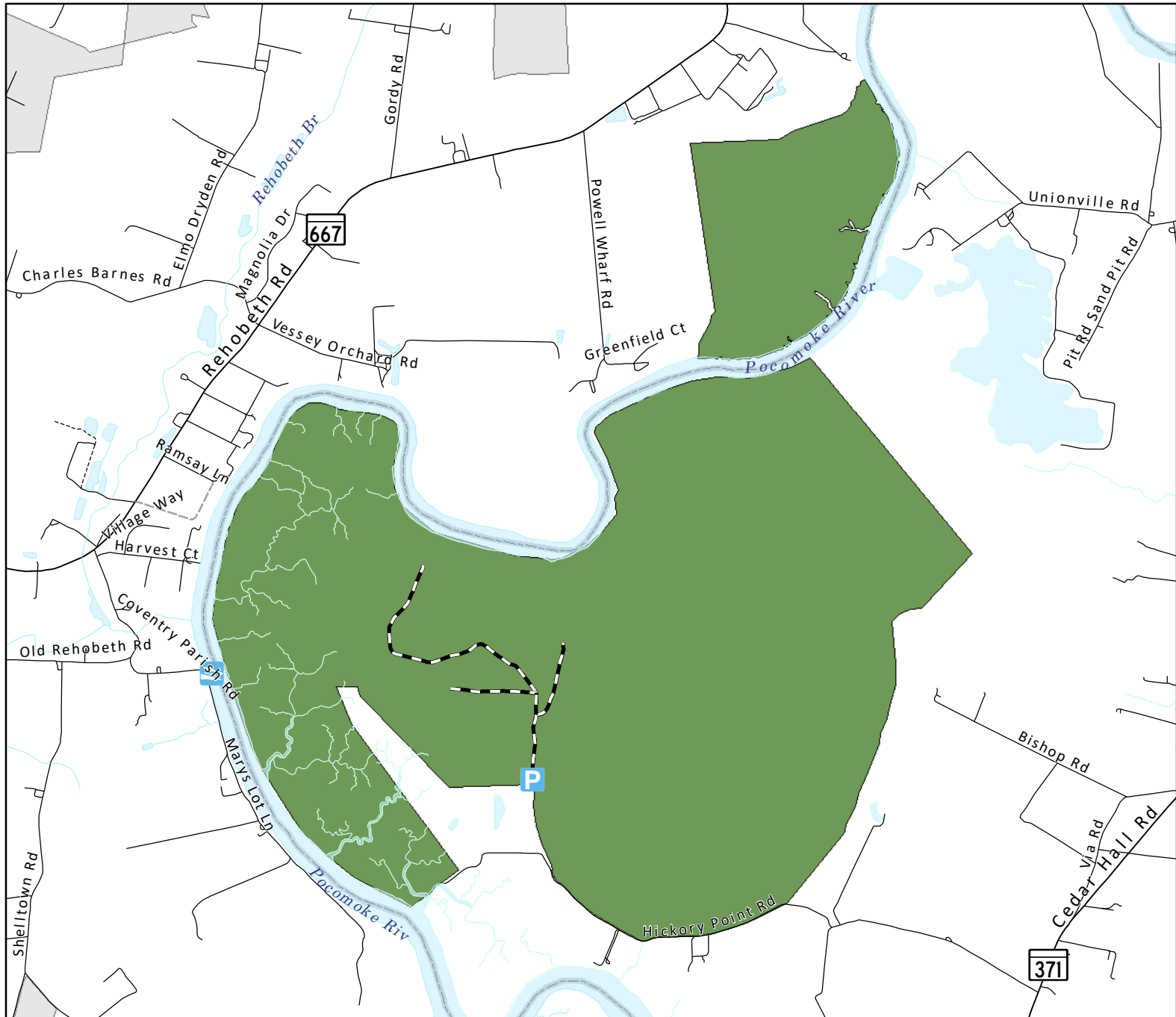
-  CF Public Hunting Tracts
-  CF Tracts Not Open for Public Hunting



State Forest Office: 1-410-632-3732
 Forest Watch: 1-800-825-7275
 Natural Resources Police
 (Emergencies): 1-410-260-8888

POCOMOKE SF EAST





Legend

Roads & Trails



Boat Ramp



Parking Area



Pocomoke State Forest



State Park



Wildlife Management Area

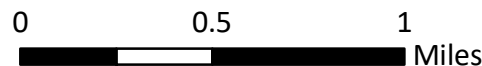
Chesapeake Forest



CF Public Hunting Tracts



CF Tracts Not Open for Public Hunting



State Forest Office: 1-410-632-3732

Forest Watch: 1-800-825-7275

Natural Resources Police

(Emergencies): 1-410-260-8888

POCOMOKE SF HICKORY POINT

