

# Savage River State Forest



## HORSEBACK RIDING



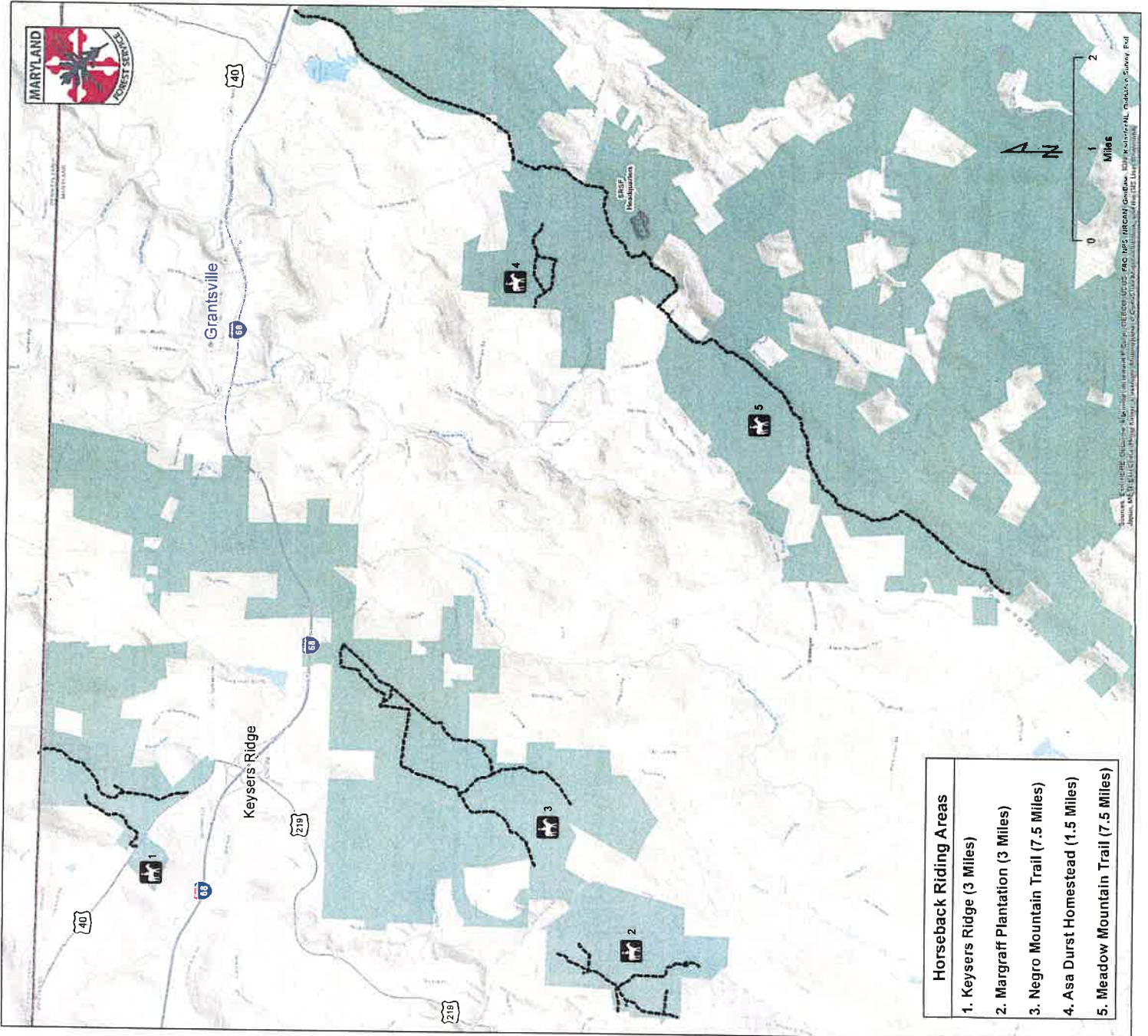
The facilities and services of the Maryland Department of Natural Resources are available to all without regard to race, religion, sex, sexual orientation, age, national origin, disability, or marital status. Requests for information in alternative format upon request from a qualified individual with a disability.

Larry Hogan, Governor  
Boyd K. Rutherford, Lt. Governor

Donald VanHassent, Director, Forest Service

TTY via Maryland Relay: 711  
Within MD: (800) 735-2258

Out of State/Toll Free #: 1-877-620-8DNR ext. 8531  
<http://www.dnr.maryland.gov>



Horseback riding in Savage River State Forest is permitted on all maintained forest roads that are open to public vehicle traffic, except for the East Shale ORV Trail and the St Johns Rock ORV Trail. Horseback riding is NOT permitted within any state park boundaries, designated wildlands or on any designated foot trails, which include the Big Savage Hiking Trail, Poplar Lick Hiking Trail and the Monroe Run Hiking Trail.

The maps to the right illustrate the four areas of the forest recommended for horseback riding and the parking areas convenient to the sites.

Horses may be used in conjunction with camping, hunting and other forms of approved forest recreation. Visitors camping with horses should plan on using the campsites located at the Margruff Plantation and must be responsible for clean up after camping at these designated sites.

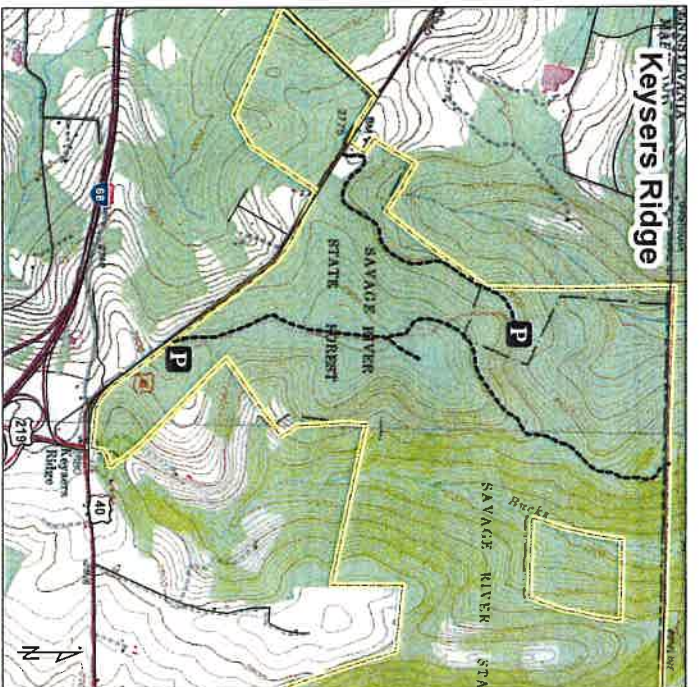
Large groups with more than twenty animals must have prior approval to assure minimal environmental impacts. Please refer to our general camping regulations.

Please contact or visit the office at:

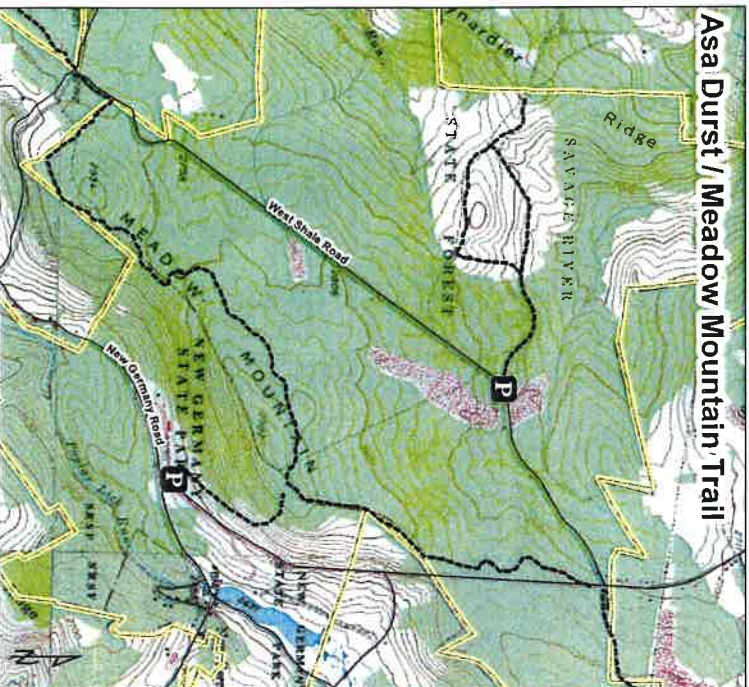
Savage River State Forest  
 127 Headquarters Lane  
 Grantsville, MD 21536  
 301-895-5759

Office Hours:  
 Monday through Friday 8:00 - 4:30

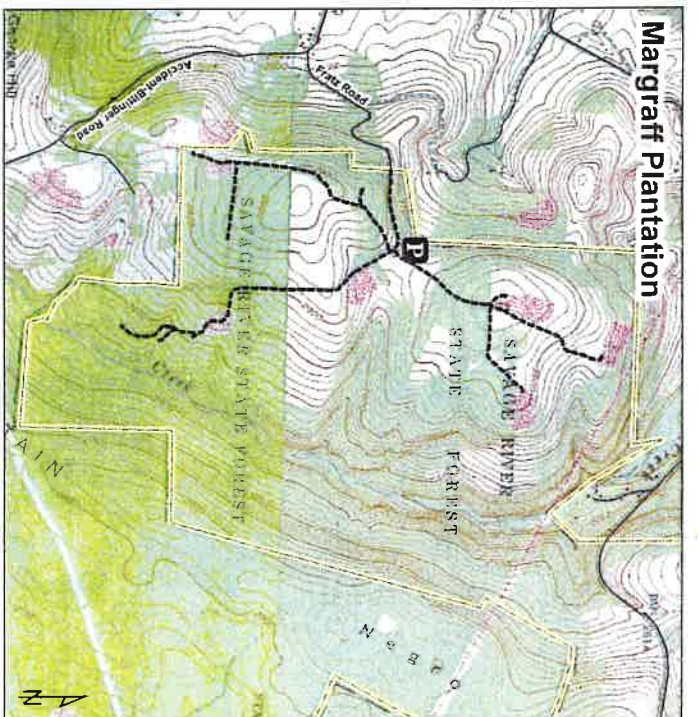
Online at:  
[www.dnr.maryland.gov/forests/](http://www.dnr.maryland.gov/forests/)



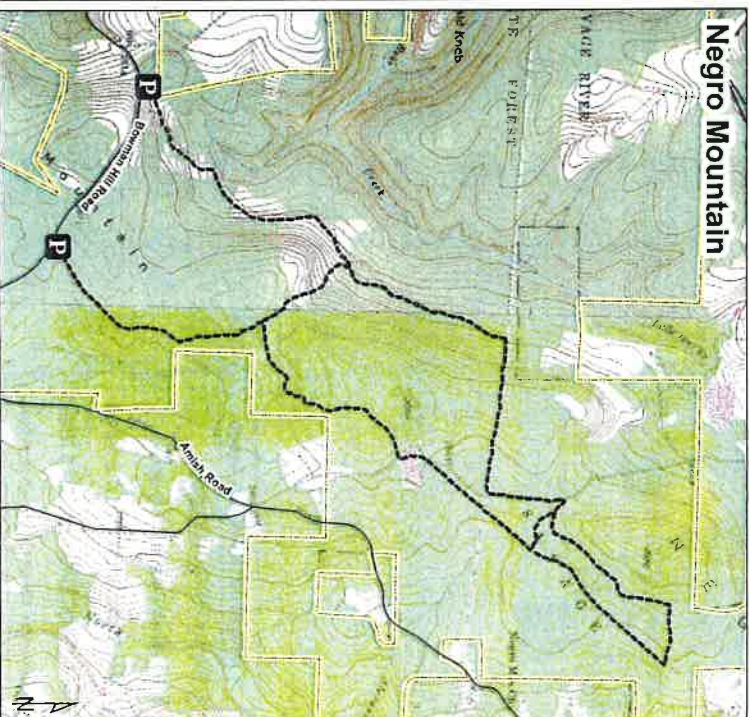
**Keyzers Ridge**



**Asa Durst / Meadow Mountain Trail**



**Margruff Plantation**



**Negro Mountain**