

POTOMAC-GARRETT STATE FOREST



DISABLED HUNTER ACCESS

UNIVERSAL DISABILITY PASS

The Universal Disability Pass (UDP) is a free lifetime pass that does not require renewal. The Universal Disability Pass permits the holder and one other person free entrance to day-use facilities at Maryland State Parks and Forests, where there are service fees associated with entrance. This pass does not cover automated gate entrance systems or service charges in the park such as camping, boat launch, rentals, bus parking, other concessions or special charges. Identification may be requested when the pass is presented.

In addition to entrance into a Maryland State Park or Forest, the pass also allows those individuals who possess a valid hunting license to hunt from a vehicle in accordance with the following regulations:

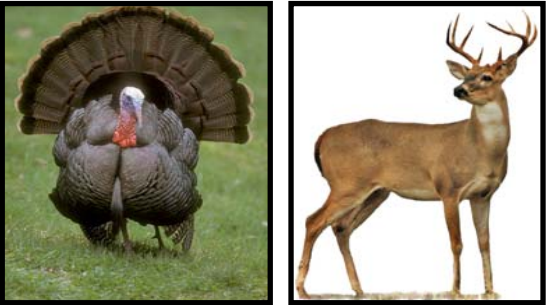
- A person who possesses a valid hunting license and who has a disability that impairs mobility may receive a permit from the department to hunt from a vehicle. However, the person may not shoot or have a loaded weapon in the vehicle while the vehicle is on a public roadway or the shoulder of a public roadway.
- Each person shall:
 1. Have the UDP in their possession while hunting;
 2. Keep the vehicle at a complete stop with the motor turned off while shooting, aiming, or firing the weapon; and
 3. Have all weapons unloaded, including no ammunition in the magazine, while the vehicle is in motion.
- A UDP holder may have a companion in the vehicle while hunting. If the companion is also a licensed hunter, they may **not** hunt from the vehicle.

In addition to any other sanction provided by law, the department may suspend or revoke the pass if the UDP holder violates any provision of this regulation.

Instructions for obtaining the UDP are available from the Department of Natural Resources website:
dnr.maryland.gov/publiclands/pages/udpinstructions.aspx

SAFETY FIRST!

Daylight fluorescent **orange** or **pink** clothing is easy for other hunters to see. Except for the few exemptions allowed in the Maryland Guide to Hunting & Trapping, a daylight fluorescent color outer garment or hat must be worn while hunting any wildlife or accompanying a hunter. Even those who are exempt are encouraged to wear fluorescent color clothing when hunting.



REMEMBER!
It is your responsibility to have the necessary skills, knowledge and equipment for a safe and environmentally sensitive visit.



Maryland

FOR MORE INFORMATION
PLEASE CONTACT:

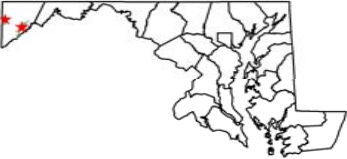
Potomac-Garrett State Forest
1431 Potomac Camp Rd
Oakland, MD 21550
301-334-2038

Toll free in Maryland: 877-620-8367
Out of state call: 410-260-8367
TTY Users call via the MD Relay
dnr.maryland.gov



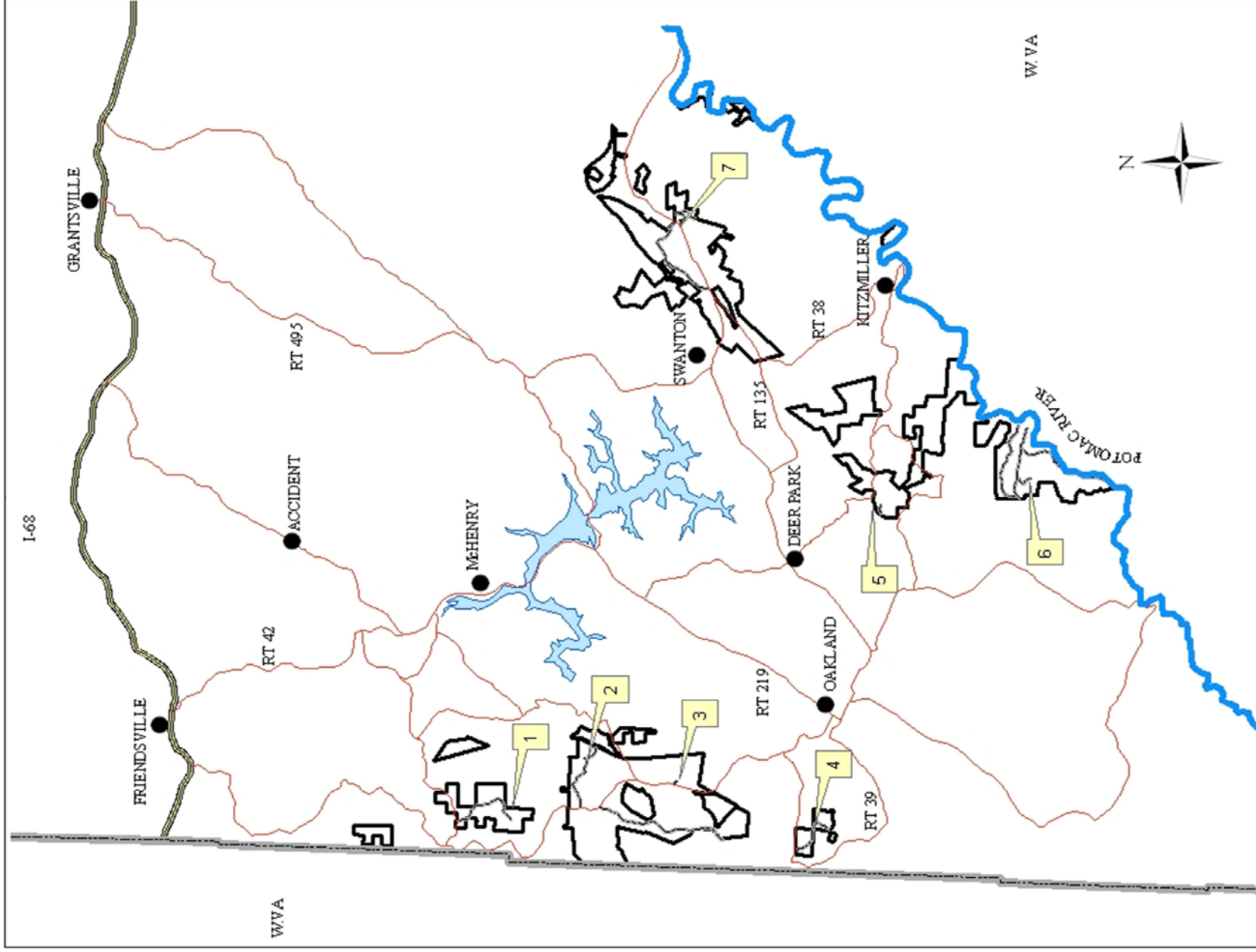
Larry Hogan, Governor

Jeannie Haddaway-Riccio, Secretary



The facilities and services of the Maryland Department of Natural Resources are available to all without regard to race, color, religion, sex, sexual orientation, age, national origin or physical or mental disability. This document is available in alternative format upon request from a qualified individual with disability.

POTOMAC-GARRETT STATE FOREST DISABLED HUNTER ACCESS ROADS



GARRETT FOREST

(Designated road, length and location)

1. **PINEY MOUNTAIN - .3 MILE**
1.75 mile from Sang Run Rd/Piney Mtn Rd intersection.
2. **MAPLE GLADE - .1 MILE**
1.3 mile from Cranesville Rd/Maple Glade Rd intersection.
3. **HERRINGTON CREEK - .15 MILE**
1 mile south of Swallow Falls Rd/Cranesville Rd intersection.
4. **KINDNESS DEMONSTRATION AREA - 1.45 MILE**
.6 mile from Rt 39/Fingerboard Rd intersection.

POTOMAC FOREST

(Designated road, length and location)

5. **EAGLE ROCK - .25 MILE**
.3 mile from Boiling Springs/Eagle Rock Rd intersection.
6. **LOOP ROAD - .6 MILE**
1.75 mile from White Church Steyer Rd/Audley Riley Rd intersection.
7. **BACKBONE MOUNTAIN - 1.20 MILE**
1.7 mile east from Walnut Bottom Rd/Rt 135 intersection.