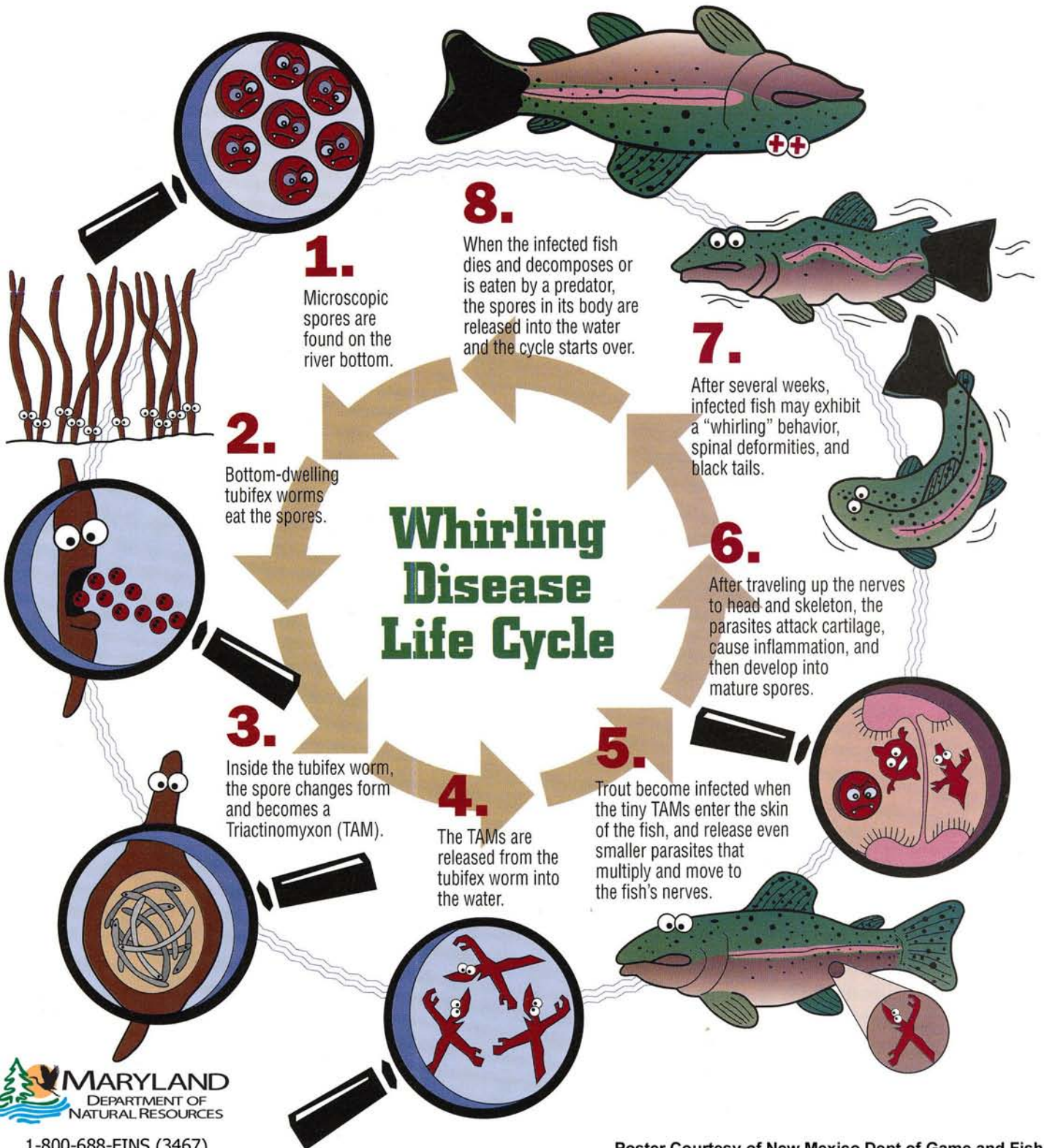


# Life Cycle of Whirling Disease

Whirling Disease poses a serious threat to Maryland's trout population. To prevent the spread of this disease it is helpful to understand its life cycle.



# Here's what YOU can do to prevent the spread of Whirling Disease...

Whirling Disease is spread through:  
Water, live fish, dead fish, fish used as bait,  
mud and aquatic plants

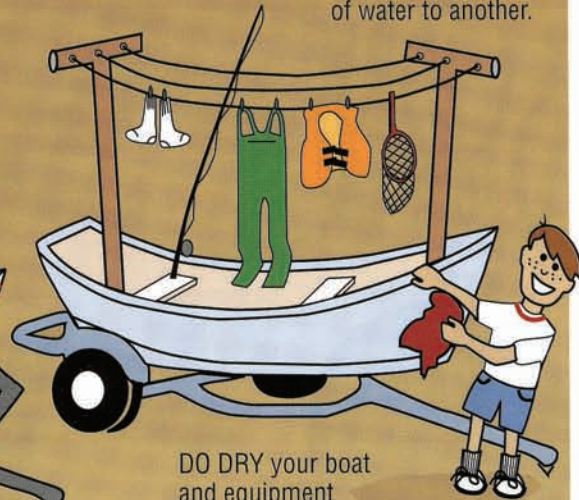


NEVER TRANSPORT fish from one body of water to another.

DON'T DISPOSE of fish entrails, bones, or other parts in any body of water or down kitchen drains or disposals.

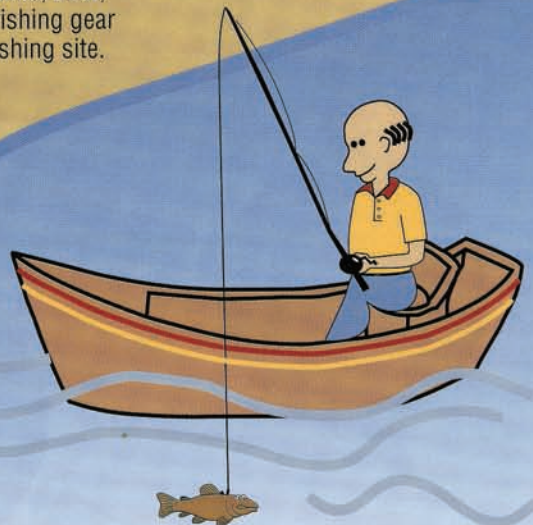
DO put them in garbage or bury away from water.

DO DRAIN all water from your boat and equipment—including coolers, buckets, and live wells—before departing a fishing site.



DO DRY your boat and equipment thoroughly before fishing new waters.

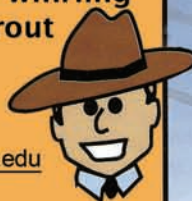
DO RINSE all mud and aquatic plants from your vehicle, boat, trailer, waders, and fishing gear before departing a fishing site.



DON'T MOVE bait between waterbodies

If you would like more information on whirling disease or become involved in other trout conservation efforts, please contact:

Whirling Disease Foundation at [whirling-disease.org](http://whirling-disease.org)  
Whirling Disease Initiative at [whirlingdisease.montana.edu](http://whirlingdisease.montana.edu)  
MD DNR at [www.dnr.maryland.gov](http://www.dnr.maryland.gov)  
Trout Unlimited at [www.tu.org](http://www.tu.org)



Poster Courtesy of New Mexico Dept. of Game and Fish