

Comprehensive Reviews

Critical Area Commission Training
November 2019



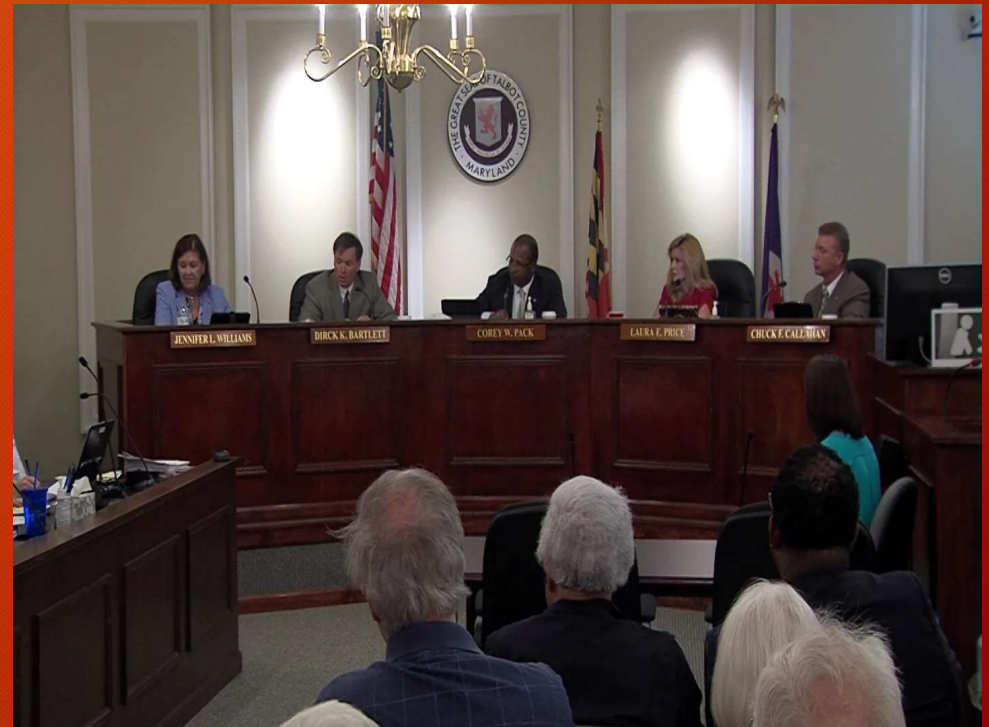
Comprehensive Reviews

- Overview
- Process for Updating Local Critical Area Ordinances
- Required Components
- Alternative Standards
- Status Report of Jurisdictions



Natural Resources Article 8-1809(g)

- “Each local jurisdiction shall review its entire program and propose any necessary amendments to its entire program.”
- Includes Amendments to Local Zoning Maps
- Required at least every six years



Submittal Requirements

- Statement certifying the comprehensive review has been completed
- Requests for program amendments or refinements to be considered
- Updated Resource Inventory
- Statement quantifying acreages within each land classification, the growth allocation used, and the growth allocation remaining





DORCHESTER COUNTY

PLANNING & ZONING OFFICE
501 Court Lane, Room III
P.O. Box 107
Cambridge, Maryland 21613

Steve Dodd, Director
Rodney Banks, Asst. Director
410-228-3234 office
410-228-1563 facsimile

May 9, 2017

Ms. Charlotte Shearin
Critical Area Commission
1804 West Street, Suite 100
Annapolis, MD 21401

Dear Ms. Shearin,

On May 2, 2017 during a scheduled public hearing the Dorchester County Council adopted the enclosed bill, No. 2017-3. This bill was an update to the County's Critical Area Program Ordinance and unified the program into Chapter 68 of the County Code. The County request that the bill be taken up for approval by the Critical Area Commission at its earliest available meeting. The County is aware that this update is not law until it is approved by the Commission.

Regards,

Brian Soper
Environmental Planner

Encl: (1)

CC: File Dorchester Planning and Zoning



TOWN OF NORTH BEACH

"The Jewel of the Chesapeake Bay"

8916 CHESAPEAKE AVENUE

P.O. Box 99

NORTH BEACH, MARYLAND 20714

Phone: 301.855.6681 or 410.257.9618 Fax: 301.855.0113

Mark R. Frazer, Mayor

October 16, 2017

Critical Area Commission for the Chesapeake
& Atlantic Coastal Bays
1804 West Street, Suite 100
Annapolis, MD

Re: Town of North Beach Critical Area Map
Update

Dear Chairman Deegan:

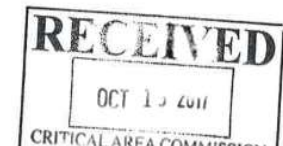
The Town of North Beach Mayor and Council passed Ordinance 17-12; An Ordinance of the Mayor and Council of the Town of North Beach to approve the Town of North Beach Summary Draft Critical Area Map provided by the Department of Natural Resources and the Critical Area Commission. This ordinance was passed on September 14, 2017. A copy is enclosed.

At this time, the Town is requesting the map is processed as a refinement at the Commission's next meeting.

If you have any additional questions please feel free to contact me.

Sincerely,

Stacy Wilkerson, Town Clerk
Town of North Beach



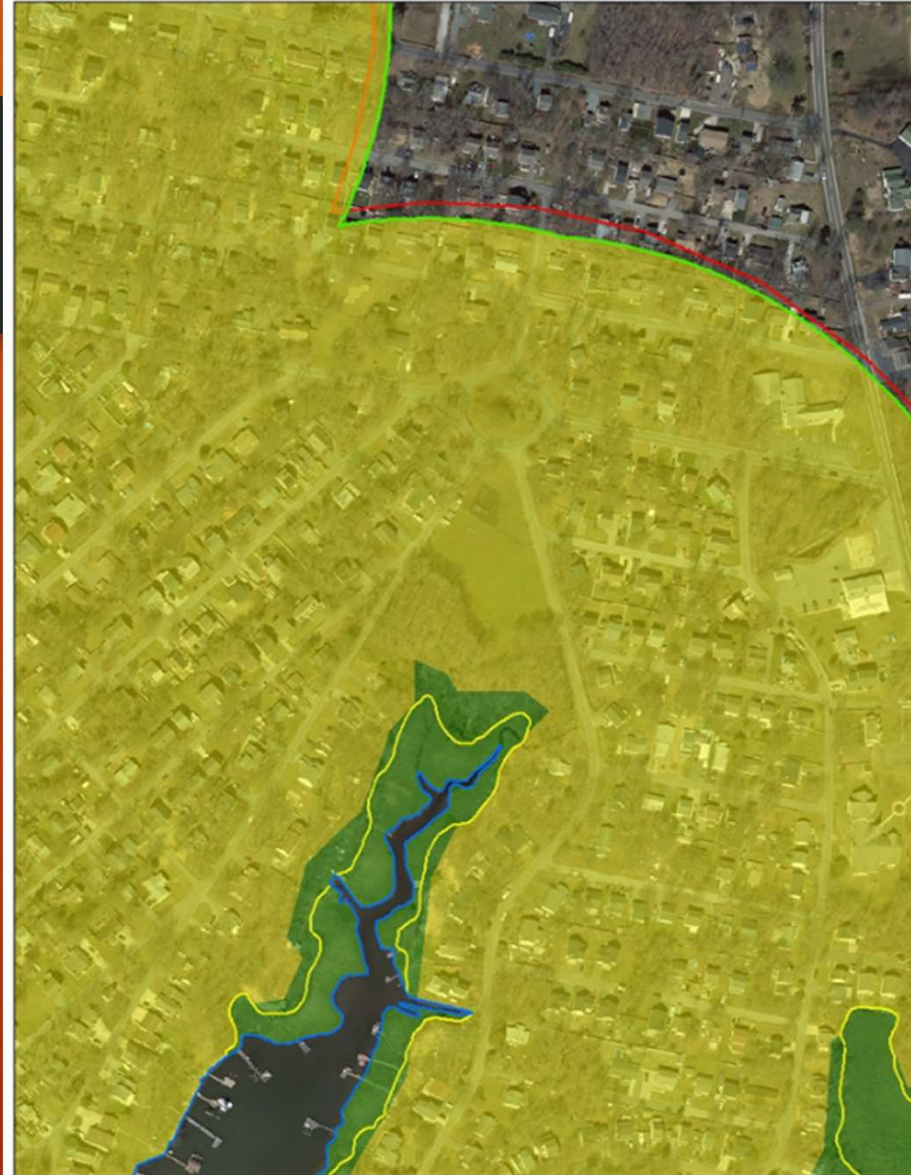
Natural Resources Inventory Update

- COMAR 27.01.10.A
- Work with DNR to identify any updates to the location of Rare, Threatened, and Endangered Species
- Coordinate with Claudia Jones, Science Advisor
- Include reference to updated Data Sources in Comp Review



Acreages

- Acreage totals for RCA, LDA, and IDA
 - Can be calculated using updated Critical Area Maps
- Growth Allocation Acreages
 - Total Amount
 - Total Used
 - Total Remaining
 - Coordinate with Critical Area staff (Michael Grassmann) to update Growth Allocation Records
 - michael.grassmann@maryland.gov



Guidance Documents

- Town : Model Ordinance Document
- County - Comprehensive Review Guidance Document
- Questions?
 - Charlotte Shearin
charlotte.shearin@maryland.gov
 - Nick Kelly
nick.kelly@maryland.gov



Flexible Provisions



- Jurisdictions can create local provisions that are “at least as effective” as the Commission’s Laws and Regulations
 - Growth Allocation non-adjacency standards
 - Buffer provisions (Parent Parcel Language)
 - RCA Uses
 - Fee in Lieu
 - Climate Resiliency

Collaboration

- Reach out to Commission Staff early and often
 - Available to meet and discuss process and provisions
 - Available to meet and discuss with County Commissioners/Council
 - Can review draft documents and discuss flexible alternative provisions



Who is Due/In Progress

Jurisdiction	Status
Anne Arundel County	2013
Baltimore City	2002; Comprehensive Review In Process
Baltimore County	1995
Calvert County	2010; Comprehensive Review in Process
Caroline County	1990
Cecil County	2010; Comprehensive Review In Process
Charles County	2012
Dorchester County	2017
Harford County	2011; Comprehensive Review In Process
Kent County	2003
Prince George's County	2011; Comprehensive Review In Process
Queen Anne's County	1996; Comprehensive Review In Process
St. Mary's County	2002; Comprehensive Review In Process
Somerset County	2014
Talbot County	2019
Wicomico County	2001; Comprehensive Review In Process
Worcester County	2002; Comprehensive Review In Process

Questions?

