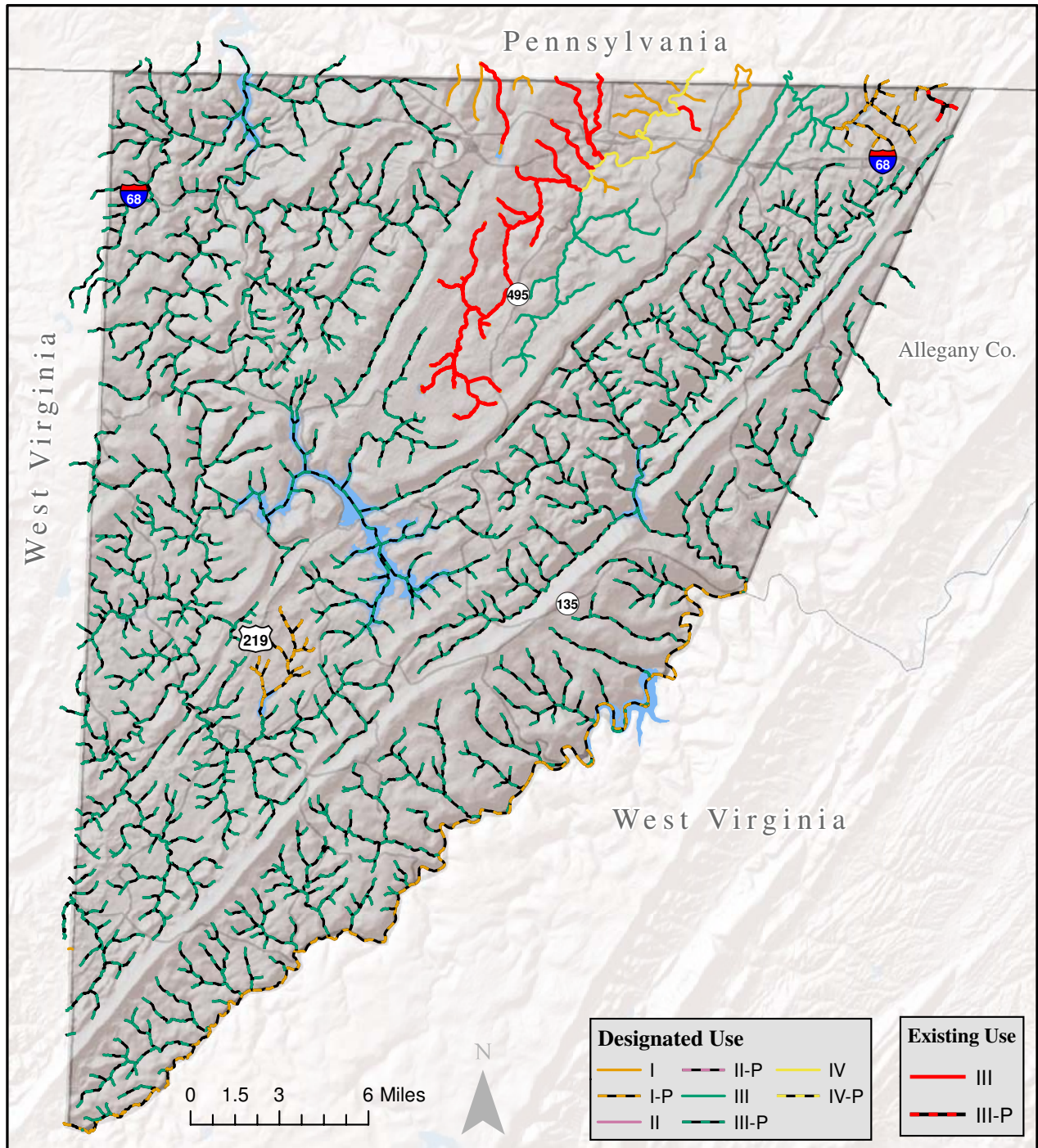


Stream Segment Use Designations in Garrett County

[Code of MD Regulations (COMAR) 26.08.02.08]



MARYLAND
 Martin O'Malley, Governor
 Anthony G. Brown, Lt. Governor
 Shari T. Wilson, Secretary
 Robert M. Summers, Deputy Secretary

The stream segment designations shown include existing uses that are different than the designated use. These streams will be protected for the more stringent use. For these (red) streams please see the existing use map for Garrett County.

MDE
 Maryland Department of the Environment
 Science Services Administration
 Montgomery Park Business Center
 1800 Washington Boulevard
 Baltimore, Maryland 21230-1718
 Date Map Prepared: July 1, 2010