

MIDDLE RIVER — Frog Mortar Creek and Stansbury Creek

What is being considered?

The department needs to amend the speed limit in Frog Mortar Creek and Stansbury Creek. The limit will be changing from a speed limit of 6-knots on Saturdays, Sundays, and State holidays all year to a speed limit of 6-knots on Saturdays, Sundays, and State holidays during the boating season.

Why is this change necessary?

Many years ago, a request was made to change the speed limit for the areas described as Frog Mortar Creek and Stansbury Creek, tributaries of Middle River. The change was discussed with the public and the Boat Act Advisory Committee (BAAC) and the department agreed that a change needed to be made in the area. A proposal for the Middle River was completed in 2013, but the specific change for Frog Mortar Creek and Stansbury Creek was overlooked.

The speed limits for Middle River are located in the Code of Maryland Regulations (COMAR) 08.18.14. Each regulation in Chapter 14 describes a part of Middle River. Upper Middle River is described in Regulation .03 and, as written, includes Frog Mortar Creek and Stansbury Creek. The creeks are described in Regulation .05. The speed limit was changed for the larger area described in Regulation .03, but not for the creeks described in Regulation .05. Since the requirements were located in different regulations, they were overlooked when making changes.

The change is consistent with the recommendation from the Boat Act Advisory Committee (BAAC) regarding speed limits on Saturdays, Sundays, and State holidays. The BAAC has recommended that any speed limit that is considered for Saturday, Sunday, and State holidays be limited to during the boating season, not in place year-round. Their recommendation is based on the idea that boat traffic on any weekday in the summer would be similar to any boat traffic on the winter weekends.

Who will this affect?

Anyone who uses Frog Mortar Creek and Stansbury Creek.

Has this change been discussed with advisory bodies?

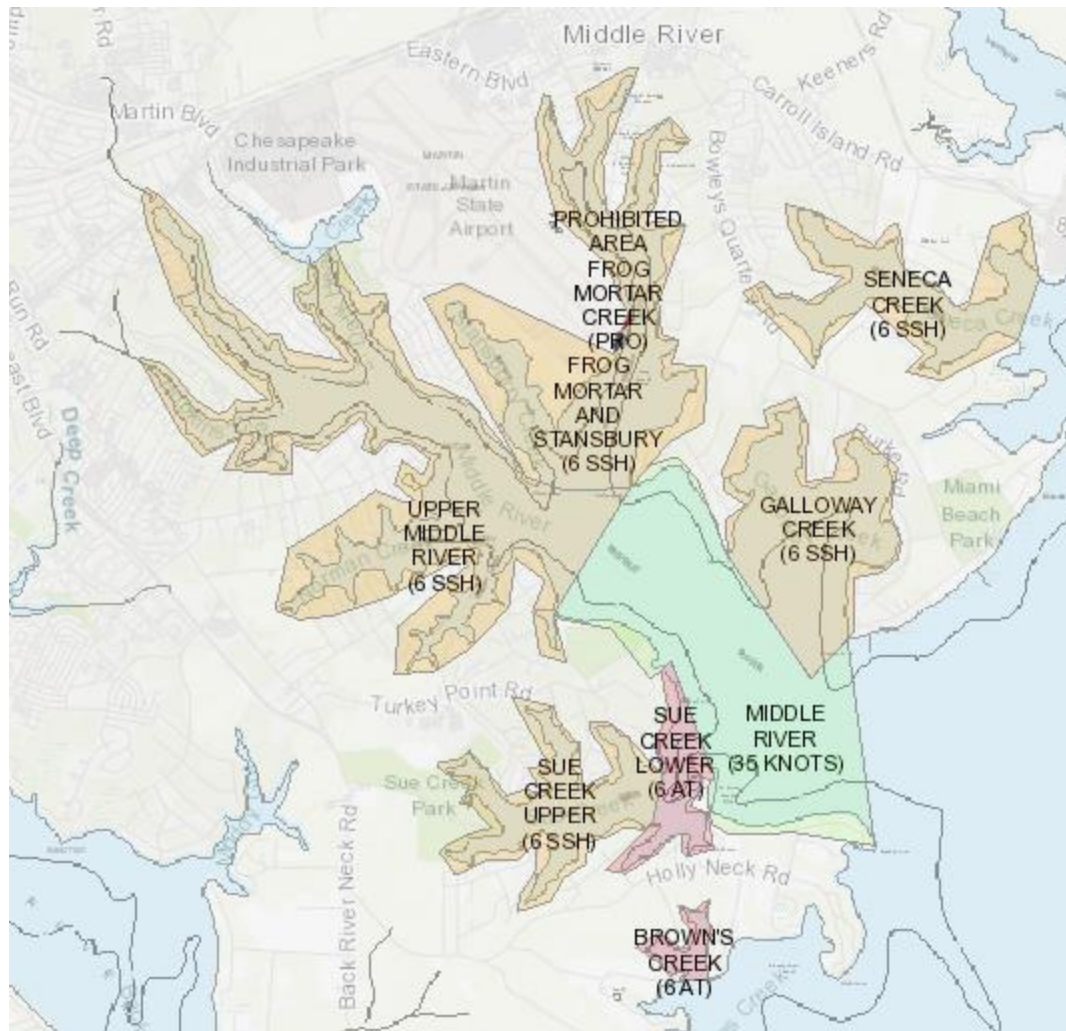
The idea was presented to the Boat Act Advisory Committee (BAAC) at their meeting on April 29, 2021. The department and the BAAC will continue to gather and update information.

What is the specific regulatory action?

Amend Regulation .05 under COMAR 08.18.14 Middle Creek.

Map of Area

This map is taken from the [Map of Speed Zones](#) and shows the general area and regulations for the area. SSH means Saturdays, Sundays, and State holidays. The online map has additional details (during boating season, at all times, etc.) for each area.



When will this be effective?

If proposed, this change could be effective in 2021, however the exact date cannot be determined. The department will follow our normal scoping and proposal procedures.

This idea is in the scoping process. The goal of scoping is to identify issues, potential impacts, and reasonable alternatives associated with the issues so that management actions can be developed. After the public has had an opportunity to comment on possible management actions during the scoping process, the department considers these comments and develops an appropriate management strategy.

If the action is necessary and appropriate, the rules will be promulgated following the Administrative Procedures Act described in Title 10, Subtitle 1 of the State Government Article Annotated Code of Maryland.

- The General Assembly’s Administrative, Executive, and Legislative Review Committee reviews the regulatory proposal for fiscal and legal analysis.
- The proposal is printed by the Division of State Documents in the Maryland Register.
- A 30-day public comment period begins on the day of publication.

- After review of the comments, the department may adopt the changes.
- If the department adopts the changes, they become effective after a notice is published in the Maryland Register that announces approval and the effective date.

Additional Information and Links

Code of Maryland Regulations:

[COMAR 08.18.14.03 Upper Middle River](#)

[COMAR 08.18.14.05 Frog Mortar Creek and Stansbury Creek](#)

[Middle River Speed Limit Letter](#) — Letter from the department indicating that the change would be made.

Notes Regarding This Summary

This summary is prepared in accordance with the requirements of State Government Article, §10-110, Annotated Code of Maryland. It is intended to help you understand the potential or revised rules. This summary is not intended to replace or supersede these rules, but to facilitate understanding and compliance with the rules. The department will clarify or update the text of the summary as the idea moves through the regulatory process.